



AUSTRALIAN NATIONAL ANTARCTIC RESEARCH EXPEDITIONS

# ANARE RESEARCH NOTES 31

ADBEX I cruise zooplankton data

R. Williams  
J.M. Kirkwood  
D.B. O'Sullivan

ANTARCTIC DIVISION  
DEPARTMENT OF SCIENCE

AUSTRALIAN NATIONAL ANTARCTIC RESEARCH EXPEDITIONS

A N A R E  
R E S E A R C H  
N O T E S  
31

ADBEX I cruise zooplankton data

R. Williams  
J.M. Kirkwood  
D.B. O'Sullivan

ANTARCTIC DIVISION  
DEPARTMENT OF SCIENCE

ANARE RESEARCH NOTES (ISSN 0729-6533)

This series allows rapid publication in a wide range of disciplines. Copies of this and other ANARE Research Notes are available from the Antarctic Division. Any person who has participated in Australian National Antarctic Research Expeditions is invited to publish through this series. Before submitting manuscripts authors should obtain a style guide from:

The Publications Office  
Antarctic Division  
Channel Highway  
Kingston  
Tasmania 7150  
Australia.

Published June 1986  
ISBN: 0 642 09927 8





ADBEX I CRUISE ZOOPLANKTON DATA

by

R. Williams, J.M. Kirkwood, D.B. O'Sullivan

Antarctic Division  
Department of Science  
Kingston, Tasmania, Australia

ABSTRACT

This report summarises the data on zooplankton collected during the ADBEX I cruise on M.V. Nella Dan during November and December 1982. It includes a station list, description of the nets used, the composition of catches, and some analysis of the catches of Euphausia superba.



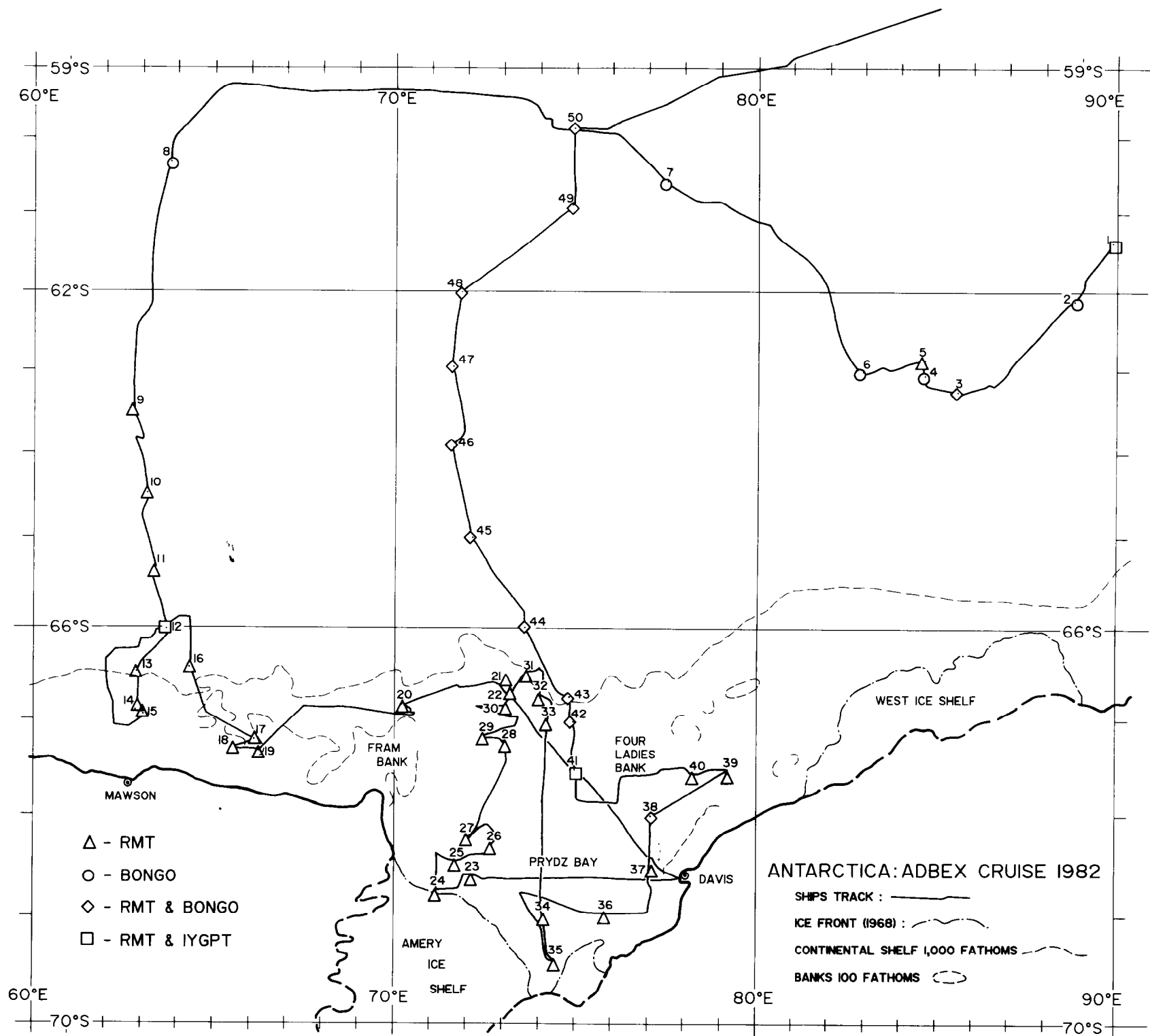


Figure 1. ADBEX I cruise track.



## 1. INTRODUCTION

Following the First International BIOMASS Experiment (FIBEX) in early 1981, of which the zooplankton results were summarised in ANARE Research Notes Number 7, the Antarctic Division mounted a similar cruise in late 1982 to study the distribution and abundance of krill (Euphausia superba Dana) in the early summer. The results of the zooplankton sampling during this Antarctic Division Biomass Experiment (ADBEX) cruise are reported here.

A Simrad EK 120 echo sounder (120kHz) with a Simrad QD echo integrator was used to map the distribution of acoustic targets along the cruise track shown in Figure 1. Also shown are the stations where net sampling was conducted and where physical and chemical oceanographic data and phytoplankton samples were collected. The cruise track was established at the beginning of the expedition to eliminate any bias, and was followed as closely as ice and weather conditions would permit.

### 1.1 TYPES OF NETS USED

#### 1.1.1 Rectangular midwater trawl (RMT 8)

A standard RMT with a mouth area of 8 m<sup>2</sup> and a mesh size of 4.5 mm was used. Opening and closing was achieved by means of an electro-mechanical release activated via an electrically conducting towing wire. Combined with the release was a depth and temperature monitor which displayed information in real time on deck. This allowed the authors to aim the net at specific targets with a vertical accuracy of  $\pm 2$  m or better. The release and monitor was not ready, however, until Station 12 (28 November 1982), and prior to that date the net was tied open and the fishing depth calculated by wire angle and amount of wire out.

#### 1.1.2 Bongo nets

Each net of the pair used had a square mouth of 500 mm each side and a mesh size of 1 mm. A TSK towing depth/distance meter was fitted in the right hand net.

#### 1.1.3 International Young Gadoid Pelagic Trawl (YGPT)

A standard YGPT of 17.5 m headline length and 39.5 m total length with a cod end mesh of 10 mm was used with lightweight suberkrub doors 2.0 m high x 1.12 m wide.

### 1.2 STATION PROCEDURE

Stations were taken during the morning, afternoon and as close as possible to midnight. Some were not able to be taken early in the season because of difficulties with pack ice.

Oblique tows with bongo nets were made at Stations 2 to 10 and 42 to 50. At three stations, YGPT hauls were made, principally to establish whether RMT nets sample the full size range of E. superba. Station 41 was occupied for twenty-seven hours to ascertain the vertical distribution of E. superba over a daily cycle.

### 1.3 TREATMENT OF CATCH

The whole catch was weighed as accurately as possible immediately it was brought onboard. Large medusae etc. were also weighed individually. E. superba was then sorted from the catch, and the balance sorted into major groups, e.g. pteropods, copepods, fish, and preserved. A random sample of at least two hundred E. superba were then measured and sorted for sex and maturity stage and preserved as a separate sample. The balance of the E. superba catch was either preserved or frozen. On return to Australia, the catches were sorted into individual species, weighed and counted. Species determinations were done by the authors, except for pteropods (identified by Dr F. Wells of the Western Australian Museum) and cephalopods (identified by Dr C.C. Lu of the Museum of Victoria).

## 2. STATION LIST

Details of the stations occupied are presented on the following pages.

Note:

1. All times are GMT.
2. Towing speed is expressed in knots.
3. All depths are in metres.
4. Ice is expressed in the following code:

0 = no pack ice, no icebergs

1 = 1-10 icebergs visible

2 = 11 or more icebergs visible

3 = pack ice 1/10-3/10 )

4 = pack ice 4/10-7/10 ) icebergs may or may not be present.

5 = pack ice 8/10-10/10 )

This code represents the general ice conditions of the area. Where pack ice is indicated as being greater than 2/10, the actual fishing was done in a lead clear of ice.

STN NO.	HAUL NO.	DATE	TIME START GMT	TIME END GMT	START POSITION		NET TYPE	TRAJECT.	DEPTH RANGE (m)	TOWING SPEED	BOTTOM DEPTH	WATER TEMP.	ICE
1	1	19.11.82	1247	1317	61°21.7'	89°53.1'	RMT	HORIZ	75	3	4205	-	4
1	2	19.11.82	1408	1438	61°23.3'	89°51.6'	RMT	HORIZ	40	3	4210	-	4
1	3	19.11.82	2008	2020	61°22.4'	89°59.3'	IYGPT	HORIZ	20	3	4225	-	4
2	4	20.11.82	0610	0643	62°06.6'	88°43.4'	BONGO	OBLIQUE	0-200	3	3750	-	5
3	5	21.11.82	0940	1018	63°12.2'	85°33.1'	BONGO	OBLIQUE	0-200	3	3770	-	5
3	6	21.11.82	1033	1056	63°12.2'	85°33.1'	RMT	HORIZ	75	3	3770	-	5
4	7	22.11.82	0717	0730	63°03.9'	84°43.2'	BONGO	OBLIQUE	SURFACE	3	2872	-	5
5	8	22.11.82	0926	0956	62°56.9'	84°41.9'	RMT	HORIZ	12	3	2793	-	5
5	9	22.11.82	1010	1040	62°56.9'	84°41.9'	RMT	HORIZ	75	3	2793	-	5
6	10	22.11.82	1610	1630	63°03.3'	82°56.1'	BONGO	OBLIQUE	0-80	2	2581	-	4
7	11	23.11.82	1630	1650	60°31.2'	77°29.8'	BONGO	OBLIQUE	SURFACE	3	3400	-	3
8	12	25.11.82	1717	1737	60°22.6'	63°45.0'	BONGO	OBLIQUE	0-80	3	4675	-	3
9	13	26.11.82	1725	1755	63°29.9'	62°45.1'	RMT	OBLIQUE	10-100	3	4097	-	5
10	14	27.11.82	1049	1129	64°35.8'	63°08.9'	RMT	OBLIQUE	10-100	3	3580	-	4
11	15	28.11.82	0035	0121	65°23.7'	63°23.3'	RMT	OBLIQUE	30-100	3	3400	-	5
12	16	28.11.82	1506	1540	66°01.9'	63°50.9'	IYGPT	HORIZ	30	3	2896	-	4
12	17	28.11.82	1634	1704	66°03.4'	63°47.7'	RMT	HORIZ	36	3	2910	-1.6	4
13	18	29.11.82	0321	0400	66°31.8'	62°51.8'	RMT	HORIZ	55	3	2200	-1.6	4
14	19	29.11.82	1713	1747	66°52.2'	62°52.1'	RMT	OBLIQUE	0-100	3	220	-	2
15	20	30.11.82	0308	0347	66°52.6'	62°57.2'	RMT	OBLIQUE	0-120	3	120	-	2
16	21	2.12.82	1755	1825	66°24.1'	64°21.6'	RMT	HORIZ	30	3	-	-1.6	4

17	22	3.12.82	0734	0804	67°13.4'	66°12.3'	RMT	HORIZ	35	3	563	-1.4	2
18	23	3.12.82	1040	1100	67°18.3'	65°33.8'	RMT	HORIZ	110	3	110	-1.6	2
19	24	3.12.82	1715	1745	67°18.3'	66°16.5'	RMT	HORIZ	83	3	400	-1.4	0
20	25	4.12.82	1724	1754	66°48.4'	70°12.3'	RMT	HORIZ	30	3	1489	-1.7	2
21	26	5.12.82	1344	1411	66°38.7'	72°49.1'	RMT	HORIZ	22	3	1016	-1.5	3
22	27	5.12.82	1608	1638	66°45.7'	73°04.3'	RMT	HORIZ	14	3	535	-1.5	3
23	28	8.12.82	0942	1012	68°34.6'	72°05.4'	RMT	HORIZ	35-45	3	436	-1.7	5
24	29	8.12.82	1716	1746	68°42.3'	71°06.8'	RMT	HORIZ	18	3	732	-1.7	5
25	30	9.12.82	0324	0354	68°26.0'	71°40.8'	RMT	HORIZ	25-30	3	613	-1.7	5
26	31	9.12.82	0920	0950	68°15.3'	72°38.8'	RMT	HORIZ	21	3	785	-1.6	2
27	32	9.12.82	1554	1625	68°06.4'	71°58.7'	RMT	HORIZ	26	3	639	-1.7	5
28	33	10.12.82	0326	0356	67°16.9'	73°04.1'	RMT	HORIZ	22-45	3	570	-1.7	5
29	34	10.12.82	0830	0855	67°10.3'	72°29.2'	RMT	HORIZ	105	3	565	-1.7	5
30	35	10.12.82	1551	1621	66°53.4'	72°56.8'	RMT	HORIZ	26	3	516	-1.5	5
31	36	11.12.82	0332	0400	66°28.2'	73°38.4'	RMT	HORIZ	21	3	2100	-1.4	4
32	37	11.12.82	0916	0946	66°43.2'	73°59.7'	RMT	HORIZ	30-50	3	1646	-1.4	5
33	38	11.12.82	1548	1621	66°57.8'	74°11.6'	RMT	HORIZ	21	3	445	-1.5	3
34	39	12.12.82	0309	0324	69°00.5'	74°04.4'	RMT	HORIZ	88	3	721	-1.7	2
35	40	12.12.82	0858	0927	69°26.3'	74°27.5'	RMT	HORIZ	40-70	3	743	-1.5	4
36	41	13.12.82	0308	0338	69°00.7'	75°48.7'	RMT	HORIZ	40-60	3	750	-1.5	2
37	42	13.12.82	0931	1001	68°33.6'	77°01.5'	RMT	HORIZ	20	3	735	-0.4	2

STN NO.	HAUL NO.	DATE	TIME START GMT	TIME END GMT	START POSITION LAT. (S) LONG. (E)		NET TYPE	TRAJECT. DEPTH RANGE (m)	TOWING SPEED	BOTTOM DEPTH	WATER TEMP.	ICE
38	43	13.12.82	1428	1458	67°56.1'	76°57.8'	RMT	HORIZ 45	3	427	-1.3	2
38	44	13.12.82	1520	1550	67°57.1'	77°09.8'	BONGO	OBLIQUE 0-200	3	446	-	2
39	45	13.12.82	2236	2304	67°30.2'	79°10.9'	RMT	HORIZ 13	3	520	-1.8	2
40	46	14.12.82	0332	0402	67°33.4'	78°15.1'	RMT	HORIZ 88	3	180	-1.6	2
41	47	14.12.82	1801	1831	67°29.9'	74°57.4'	RMT	HORIZ 15	3	465	0.8	2
41	48	14.12.82	1858	1913	67°31.5'	74°56.8'	RMT	HORIZ 50	3	465	-1.4	2
41	49	14.12.82	1931	1946	67°31.2'	74°57.9'	RMT	HORIZ 15	3	461	0.6	2
41	50	14.12.82	2007	2022	67°31.1'	74°58.4'	RMT	HORIZ 90	3	464	-1.2	2
41	51	14.12.82	2315	2330	67°31.6'	74°53.6'	RMT	HORIZ 16	3	475	0.1	2
41	52	14.12.82	2347	0001	67°30.3'	74°53.8'	RMT	HORIZ 60	3	475	-1.5	2
41	53	15.12.82	0023	0038	67°30.5'	74°57.1'	RMT	HORIZ 90	3	471	-1.4	2
41	54	15.12.82	0644	0659	67°33.4'	74°50.0'	RMT	HORIZ 15	3	467	0.2	2
41	55	15.12.82	0719	0734	67°33.1'	74°49.6'	RMT	HORIZ 45	3	468	-1.4	2
41	56	15.12.82	0753	0813	67°33.0'	74°49.1'	RMT	HORIZ 90	3	461	-1.4	2
41	57	15.12.82	1156	1211	67°33.2'	74°44.9'	RMT	HORIZ 14	3	484	1.0	2
41	58	15.12.82	1226	1241	67°33.8'	74°44.8'	RMT	HORIZ 45	3	476	-1.5	2
41	59	15.12.82	1257	1312	67°35.1'	74°42.4'	RMT	HORIZ 90	3	490	-1.7	2
41	60	15.12.82	1757	1812	67°33.1'	74°40.0'	RMT	HORIZ 14	3	488	1.3	2
41	61	15.12.82	1827	1842	67°33.8'	74°40.4'	RMT	HORIZ 45	3	485	-1.4	2
41	62	15.12.82	1915	1930	67°33.5'	74°39.5'	RMT	HORIZ 90	3	487	-1.6	2
41	63	15.12.82	2017	2052	67°33.5'	74°40.4'	IYGPT	HORIZ 20	3	489	-	2

42	64	16.12.82	1019	1034	67°01.9'	74°55.7'	RMT	HORIZ	14	3	397	0.3	2
42	65	16.12.82	1053	1115	67°01.9'	74°55.7'	BONGO	OBLIQUE	0-100	3	397	-	2
43	66	16.12.82	1523	1553	66°46.4'	74°41.3'	BONGO	OBLIQUE	0-200	3	2953	-	4
43	67	16.12.82	1608	1650	66°47.3'	74°38.2'	RMT	HORIZ	180	3	2800	-1.4	4
44	68	17.12.82	0435	0458	66°00.3'	73°33.2'	BONGO	OBLIQUE	0-100	3	2653	-	4
44	69	17.12.82	0514	0529	66°00.3'	73°34.5'	RMT	HORIZ	24	3	2700	-1.5	4
45	70	17.12.82	1510	1540	65°03.9'	72°06.9'	RMT	HORIZ	30-40	3	-	-1.4	3
45	71	17.12.82	1602	1640	65°01.4'	72°03.5'	BONGO	OBLIQUE	0-200	3	-	-	3
46	72	18.12.82	0055	0110	63°59.2'	71°31.4'	BONGO	OBLIQUE	0-100	3	-	-	0
46	73	18.12.82	0203	0233	64°00.6'	71°29.3'	RMT	HORIZ	75	3	-	-1.6	0
47	74	18.12.82	0912	0942	62°58.8'	71°33.2'	RMT	HORIZ	25	3	-	-1.4	1
47	75	18.12.82	1000	1015	63°00.1'	71°30.0'	BONGO	OBLIQUE	0-100	3	-	-	1
48	76	18.12.82	1546	1602	62°00.3'	71°42.6'	BONGO	OBLIQUE	0-100	3	-	-	1
48	77	18.12.82	1616	1636	62°01.4'	71°43.2'	RMT	HORIZ	18	3	-	-	1
49	78	19.12.82	0151	0221	61°00.6'	74°57.5'	RMT	HORIZ	25	3	-	-	0
49	79	19.12.82	0237	0257	61°01.7'	74°49.4'	BONGO	OBLIQUE	0-100	3	-	-	0
50	80	19.12.82	0815	0832	59°59.8'	74°54.8'	BONGO	OBLIQUE	0-100	3	-	-	0
50	81	19.12.82	0847	0908	60°00.0'	74°55.6'	RMT	HORIZ	50	3	-	-	0
51	82	23.12.82	0128	0233	53°52.1'	105°31.4'	RMT	HORIZ	470-500	3	-	2.2	0
52	83	27.12.82	1216	1316	46°49.7'	131°37.9'	RMT	HORIZ	500	3	-	-	0





### 3. COMPOSITION OF CATCHES

Details of the composition of each catch are presented on the following pages.

Note:

1. All weights are in grams.
2. For species marked with an asterisk(\*), a random subsample was weighed and counted, and the total count for that species was calculated on the proportion of the subsample weight to the total weight of the species in the catch.

DATE: 19.11.82

HAUL: A01

NET: RMT-8

LAT: 61°21.7'S

TOTAL WEIGHT: 357.65

TOTAL COUNT: 2912

LONG: 98°53.1'E

	WEIGHT:	COUNT:
CALYCOPSIS BORCHGREVINKI	50.80	26
SIPHONOPHORE NECTOPHORE	23.61	138
CTENOPHORE	1.27	4
VANADIS ANTARCTICA	0.51	1
RHYNCHONERELLA SP.	0.06	3
TOMOPTERIS CARPENTERI	9.02	9
TOMOPTERIS PLANKTONIS	0.02	2
TOMOPTERIS SEPTENTRIONALIS	0.13	3
SAGITELLA KOWALEVSKI	0.06	1
OSTRACOD	+	1
CALANUS PROPINQUUS	0.54	110
CALANOIDES ACUTUS	0.52	237
RHINCALANUS GIGAS	3.56	672
EUCHIRELLA ROSTROMAGNA	0.07	5
EUCHAETA ANTARCTICA	0.38	17
METRIDIA GERLACHEI	0.01	6
HALOPTILUS OCELLATUS	0.04	8
CANDACIA MAXIMA	0.04	14
COPEPOD INDET.	+	1
CYLOPUS LUCASII	1.80	20
VIBILIA ANTARCTICA	1.89	37
HYPEROCHE SP.	0.46	3
PARATHEMISTO GAUDICHAUDI	0.12	3
HYPERIELLA DILATATA	+	3
PRIMNO MACROPA	0.06	2
EUPHAUSIA SUPERBA	0.02	2
EUPHAUSIA FRIGIDA	0.02	1
THYSANOESSA MACRURA	12.60	461
EUKROHNIA HAMATA	3.48	252
EUKROHNIA SP.	0.17	15
SAGITTA GAZELLAE	7.44	72
SAGITTA MARRI	0.27	14
SAGITTA SP.	0.16	5
CLIO PYRAMIDATA	1.71	10
CLIONE LIMACINA	0.63	6
SALPA THOMPSONI (AGG)	75.70	643
SALPA THOMPSONI (SOL)	33.86	13
SALP INDET.	127.06	92
NOTOLEPIS COATSI	0.07	1

DATE: 19.11.82

HAUL: A02

NET: RMT-8

LAT: 61°23.3'S

TOTAL WEIGHT: 2763.66

TOTAL COUNT: 1562

LONG: 89°51.6'E

	WEIGHT:	COUNT:
SIPHONOPHORE BRACT	1.28	9
*CTENOPHORE	2371.50	INDET
VANADIS ANTARCTICA	4.91	4
RHYNCHONERELLA PETERSII	0.01	1
TOMOPTERIS CARPENTERI	31.19	33
TOMOPTERIS SP.	0.10	1
CALANUS PROPINQUUS	0.32	56
CALANOIDES ACUTUS	1.56	645
RHINCALANUS GIGAS	3.83	342
METRIDIA GERLACHEI	0.07	33
HALOPTILUS OCELLATUS	0.03	7
CYLOPUS LUCASII	3.80	35
VIBILIA ANTARCTICA	2.46	52
HYPEROCHE SP.	0.44	4
PARATHEMISTO GAUDICHAUDI (BISP.)	0.21	2
PARATHEMISTO GAUDICHAUDI (COMP.)	0.20	2
HYPERIELLA DILATATA	0.01	2
EUPHAUSIA SUPERBA	0.41	13
THYSANOESSA MACRURA	0.06	7
EUKROHNIA HAMATA	0.13	3
SAGITTA GAZELLAE	4.71	24
TRICHOTROPIDAE LARVA	0.09	1
LIMACINA HELICINA	+	2
CLIO PYRAMIDATA	2.39	14
SPONGIOBRANCHAEA AUSTRALIS	0.09	1
BRACHIOTEUTHIS RIISEI	0.79	2
*SALPA THOMPSONI (SOL)	333.07	267

DATE: 19.11.82

HAUL: A03

NET: IYGPT

LAT: 61°22.4'S

TOTAL WEIGHT: 2705.21

TOTAL COUNT: 9216

LONG: 89°59.3'E

	WEIGHT:	COUNT:
CALYCOPSIS BORCHGREVINKI	2.16	1
*SIPHONOPHORE BRACT	449.00	4201
CTENOPHORE	23.94	4
VANADIS ANTARCTICA	0.69	2
TOMOPTERIS CARPENTERI	21.26	21
*CALANOIDES ACUTUS	+	6
*RHINCALANUS GIGAS	1.95	162
CYLOPUS LUCASII	10.30	74
VIBILIA ANTARCTICA	3.15	109
HYPEROCHE SP.	0.21	2
PARATHEMISTO GAUDICHAUDI (BISP.)	0.22	2
PARATHEMISTO GAUDICHAUDI (COMP.)	0.55	4
HYPERIA MACROCEPHALA	0.62	1
EUPHAUSIA SUPERBA	14.92	200
THYSANOESSA MACRURA	6.08	156
EUKROHNIA HAMATA	0.07	3
SAGITTA GAZELLAE	5.90	19
CLIO PYRAMIDATA	4.17	20
CLIONE LIMACINA	0.55	2
BRACHIOTEUTHIS RIISEI	8.00	3
*SALPA THOMPSONI (AGG)	2143.33	4212
*SALPA THOMPSONI (SOL)	3.01	6
KREFFTICHTHYS ANDERSSONI	4.58	2
NOTOLEPIS COATSI	0.55	1

DATE: 20.11.82

HAUL: A04

NET: BONGO I

LAT: 62°06.6'S

TOTAL WEIGHT: 11.27

TOTAL COUNT: 3270

LONG: 88°43.4'E

	WEIGHT:	COUNT:
FORMANIFERAN	+	1
CALYCOPSIS BORCHGREVINKI	0.06	1
SIPHONOPHORE NECTOPHORE	+	1
CTENOPHORE	0.15	1
OSTRACOD	+	11
CALANUS PROPINQUUS	1.95	387
CALANOIDES ACUTUS	4.06	1993
RHINCALANUS GIGAS	1.73	303
EUCHAETA ANTARCTICA	0.03	29
METRIDIA GERLACHEI	0.96	403
HALOPTILUS OCELLATUS	0.03	26
COPEPOD INDET.	0.03	16
PRIMNO MACROPA	0.01	3
THYSANOESSA MACRURA	0.02	3
EUKROHNIA HAMATA	1.06	66
SAGITTA GAZELLAE	1.04	7
SAGITTA MARRI	0.11	7
TRICHOTROPIDAE LARVA	0.03	1
LIMACINA HELICINA	+	8
SALPA SP. (SOL)	+	1
LARVACEAN (TAIL)	+	2

DATE: 20.11.82

HAUL: A04

NET: BONGO II

LAT: 62°06.6'S

TOTAL WEIGHT: 12.86

TOTAL COUNT: 3597

LONG: 88°43.4'E

	WEIGHT:	COUNT:
FORMANIFERAN	+	1
SIPHONOPHORE NECTOPHORE	+	3
SIPHONOPHORE BRACT	+	1
TOMOPTERIS CARPENTERI	0.91	1
OSTRACOD	+	12
CALANOIDES ACUTUS	5.56	2510
EUCHAETA ANTARCTICA	0.07	56
RHINCALANUS GIGAS	2.29	400
METRIDIA GERLACHEI	0.80	473
PLEUROMAMMA ROBUSTA	0.01	7
HALOPTILUS OCELLATUS	0.03	17
PARATHEMISTO GAUDICHAUDI (COMP.)	+	1
HYPERIELLA DILATATA	0.01	1
PRIMNO MACROPA	0.01	2
EUPHAUSIA SUPERBA	0.01	1
THYSANOESSA MACRURA	0.08	10
EUKROHNIA HAMATA	1.05	78
SAGITTA GAZELLAE	1.38	13
SAGITTA MARRI	0.22	22
GALITEUTHIS GLACIALIS	0.43	1
SALP INDET. (SOL)	+	1
LARVACEAN (TAIL)	+	5

DATE: 21.11.82                      HAUL: A05                      NET: BONGO I  
 LAT: 63°12.2'S                      TOTAL WEIGHT: 5.12                      TOTAL COUNT: 982  
 LONG: 85°33.1'E

	WEIGHT:	COUNT:
SIPHONOPHORE NECTOPHORE	0.88	3
SIPHONOPHORE BRACT	+	1
RHYNCHONERELLA PETERSII	0.02	1
OSTRACOD	+	3
CALANUS PROPINQUUS	2.07	398
CALANOIDES ACUTUS	0.78	405
RHINCALANUS GIGAS	0.46	108
EUCHAETA ANTARCTICA	+	1
METRIDIA GERLACHEI	0.05	20
HALOPTILUS OCELLATUS	+	2
CANDACIA MAXIMA	+	2
COPEPOD INDET.	+	1
HYPERIELLA DILATATA	0.03	3
PRIMNO MACROPA	0.03	1
THYSANOESSA MACRURA	0.11	27
SAGITTA GAZELLAE	0.49	4
PLEURAGRAMMA ANTARCTICUM	0.20	2

DATE: 21.11.82                      HAUL: A05                      NET: BONGO II  
 LAT: 63°12.2'S                      TOTAL WEIGHT: 3.74                      TOTAL COUNT: 983  
 LONG: 85°33.1'E

	WEIGHT:	COUNT:
OSTRACOD	0.04	16
CALANUS PROPINQUUS	2.04	430
CALANOIDES ACUTUS	0.74	364
RHINCALANUS GIGAS	0.46	114
EUCHAETA ANTARCTICA	+	1
METRIDIA GERLACHEI	0.05	21
HALOPTILUS OCELLATUS	+	2
COPEPOD INDET.	+	3
HYPERIELLA DILATATA	0.03	5
PRIMNO MACROPA	0.03	4
THYSANOESSA MACRURA	0.09	19
EUKROHNIA HAMATA	0.03	3
PLEURAGRAMMA ANTARCTICUM	0.23	1

DATE: 21.11.82

HAUL: A06

NET: RMT-8

LAT: 63°12.2'S

TOTAL WEIGHT: 37.14

TOTAL COUNT: 815

LONG: 85°33.1'E

	WEIGHT:	COUNT:
CALYCOPSIS BORCHGREVINKI	0.51	1
SIPHONOPHORE NECTOPHORE	0.86	5
CTENOPHORE	1.97	11
VANADIS ANTARCTICA	0.44	1
TOMOPTERIS CARPENTERI	0.02	2
TOMOPTERIS SEPTENTRIONALIS	0.05	1
TOMOPTERIS SP.	7.44	13
CALANUS PROPINQUUS	2.08	394
CALANOIDES ACUTUS	0.34	149
RHINCALANUS GIGAS	0.45	81
METRIDIA GERLACHEI	0.02	9
HALOPTILUS OCELLATUS	+	1
CANDACIA MAXIMA	+	2
CYLOPUS LUCASII	0.26	3
HYPERIA MACROCEPHALA	0.23	2
PRIMNO MACROPA	0.09	1
EUPHAUSIA SUPERBA	0.18	2
THYSANOESSA MACRURA	0.18	19
SAGITTA GAZELLAE	3.59	34
LIMACINA HELICINA	+	3
TRICHOTROPIDAE LARVA	0.26	5
CLIO PYRAMIDATA	0.98	12
SPONGIOBRANCHAEA AUSTRALIS	0.10	1
CLIONE LIMACINA	0.36	6
PLEURAGRAMMA ANTARCTICUM	16.73	57



DATE: 22.11.82                      HAUL: A07                      NET: BONGO I + II  
 LAT: 63°03.9'S                      TOTAL WEIGHT: 0.56                      TOTAL COUNT: 37  
 LONG: 84°43.2'E

	WEIGHT:	COUNT:
CALANUS PROPINQUUS	0.02	3
EUPHAUSIA SUPERBA	0.54	34

DATE: 22.11.82                      HAUL: A08                      NET: RMT-8  
 LAT: 62°56.9'S                      TOTAL WEIGHT: 268.59                      TOTAL COUNT: 9021  
 LONG: 84°41.1'E

	WEIGHT:	COUNT:
SIPHONOPHORE NECTOPHORE	+	1
SIPHONOPHORE BRACT	+	3
CTENOPHORE	0.05	4
VANADIS ANTARCTICA	0.81	2
CALANUS PROPINQUUS	2.84	510
CALANOIDES ACUTUS	1.97	821
RHINCALANUS GIGAS	0.02	4
CYLOPUS LUCASII	0.15	1
VIBILIA ANTARCTICA	0.01	1
HYPEROCHE SP.	0.07	1
PRIMNO MACROPA	0.06	2
EUSIRUS SP.	0.04	1
EUPHAUSIA SUPERBA	29.40	290
*THYSANOESSA MACRURA	215.73	7150
SAGITTA GAZELLAE	0.87	15
LIMACINA HELICINA	2.35	104
SPONGIOBRANCHAEA AUSTRALIS	0.08	1
CLIONE LIMACINA	3.29	22
PSYCHROTEUTHIS SP.	0.09	1
SALPA THOMPSONI (AGG)	6.58	63
IHLEA RACOVITZAI (SOL)	0.64	1
PLEURAGRAMMA ANTARCTICUM	3.54	21

DATE: 22.11.82

HAUL: A09

NET: RMT-8

LAT: 62°56.9'S

TOTAL WEIGHT: 187.46

TOTAL COUNT: 13011

LONG: 84°41.1'E

	WEIGHT:	COUNT:
CALYCOPSIS BORCHGREVINKI	+	1
SIPHONOPHORE NECTOPHORE	59.02	167
VANADIS ANTARCTICA	3.02	6
RHYNCHONERELLA PETERSII	0.02	1
TOMOPTERIS CARPENTERI	1.85	3
TOMOPTERIS PLANKTONIS	0.01	1
TOMOPTERIS SEPTENTRIONALIS	0.30	17
TRAVISIOPSIS LEVINSENI	0.03	1
CALANUS PROPINQUUS	0.26	57
CALANOIDES ACUTUS	1.09	733
RHINCALANUS GIGAS	67.56	11053
HALOPTILUS OCELLATUS	0.34	58
CYLOPUS LUCASII	0.90	8
VIBILIA ANTARCTICA	1.40	49
HYPEROCHE SP.	0.14	1
PRIMNO MACROPA	0.06	2
EUPHAUSIA SUPERBA	0.94	26
THYSANOESEA MACRURA	7.67	295
EUKROHNIA HAMATA	1.05	70
SAGITTA GAZELLAE	11.36	183
LIMACINA HELICINA	0.75	38
CLIO PYRAMIDATA	7.67	90
CLIONE LIMACINA	3.41	28
SALPA THOMPSONI (AGG)	17.64	117
SALPA THOMPSONI (SOL)	0.94	3
IHLEA SP.	0.03	2
FISH EGG	+	1

DATE: 22.11.82

HAUL: A10

NET: BONGO I + II

LAT: 63°03.3'S

TOTAL WEIGHT: 5.80

TOTAL COUNT: 49

LONG: 82°56.1'E

	WEIGHT:	COUNT:
EUSIRUS SP.	0.17	1
SALPA THOMPSONI (AGG)	5.63	48

DATE: 23.11.82                      HAUL: A11                      NET: BONGO I  
 LAT: 60°31.2'S                      TOTAL WEIGHT: 143.83                      TOTAL COUNT: 810  
 LONG: 77°29.8'E

	WEIGHT:	COUNT:
CTENOPHORE	+	1
TOMOPTERIS CARPENTERI	0.59	1
TOMOPTERIS PLANKTONIS	0.02	1
TRAVISIOPSIS LEVINSeni	0.04	1
CALANUS PROPINQUUS	0.57	108
CALANOIDES ACUTUS	0.24	131
RHINCALANUS GIGAS	0.13	31
METRIDIA GERLACHEI	0.01	5
CYLOPUS LUCASII	0.12	1
VIBILIA ANTARCTICA	3.09	127
EUPHAUSIA SUPERBA	1.22	17
THYSANODESSA MACRURA	2.25	192
EUKROHNIA HAMATA	0.03	2
SAGITTA GAZELLAE	0.01	3
LIMACINA HELICINA	+	5
CLIONE LIMACINA	0.45	2
SALPA THOMPSONI (AGG)	18.43	87
SALPA THOMPSONI (SOL)	116.62	92
LARVACEAN	0.01	3

DATE: 23.11.82                      HAUL: A11                      NET: BONGO II  
 LAT: 60°31.2'S                      TOTAL WEIGHT: 156.52                      TOTAL COUNT: 823  
 LONG: 77°29.8'E

	WEIGHT:	COUNT:
TOMOPTERIS CARPENTERI	0.78	2
TOMOPTERIS PLANKTONIS	0.05	2
TOMOPTERIS SEPTENTRIONALIS	0.04	2
TOMOPTERIS SP.	0.01	1
CALANUS PROPINQUUS	0.49	95
CALANOIDES ACUTUS	0.28	186
RHINCALANUS GIGAS	0.15	40
METRIDIA GERLACHEI	+	1
CYLOPUS LUCASII	0.24	1
VIBILIA ANTARCTICA	4.51	156
HYPERIELLA DILATATA	+	1
EUPHAUSIA SUPERBA	1.50	22
THYSANODESSA MACRURA	1.54	149
SAGITTA GAZELLAE	0.20	1
CLIO PYRAMIDATA	0.39	1
CLIONE LIMACINA	0.27	1
SALPA THOMPSONI (AGG)	22.49	132
SALPA THOMPSONI (SOL)	123.57	24
LARVACEAN (TAIL)	0.02	6

DATE: 25.11.82                      HAUL: A12                      NET: BONGO I  
 LAT: 60°22.6'S                      TOTAL WEIGHT: 89.62                      TOTAL COUNT: 1453  
 LONG: 63°45.0'E

	WEIGHT:	COUNT:
VANADIS ANTARCTICA	0.22	1
TOMOPTERIS CARPENTERI	1.42	4
TOMOPTERIS SEPTENTRIONALIS	0.05	2
CALANUS PROPINQUUS	+	1
CALANOIDES ACUTUS	0.01	7
RHINCALANUS GIGAS	+	1
CYLOPUS LUCASII	0.18	8
VIBILIA ANTARCTICA	2.22	53
HYPERIELLA DILATATA	0.01	2
PRIMNO MACROPA	+	1
EUPHAUSIA SUPERBA	1.81	54
THYSANOESSA MACRURA	1.87	116
SAGITTA GAZELLAE	0.15	3
LIMACINA HELICINA	+	2
CLIO PYRAMIDATA	0.62	5
SALPA THOMPSONI (AGG)	71.97	1183
SALPA THOMPSONI (SOL)	9.07	8

DATE: 25.11.82                      HAUL: A12                      NET: BONGO II  
 LAT: 60°22.6'S                      TOTAL WEIGHT: 121.01                      TOTAL COUNT: 997  
 LONG: 63°45.0'E

	WEIGHT:	COUNT:
RHYNCHONERELLA BONGRAINI	0.02	1
TOMOPTERIS CARPENTERI	0.70	2
CALANUS PROPINQUUS	0.02	6
CALANOIDES ACUTUS	0.02	18
RHINCALANUS GIGAS	0.01	4
CYLOPUS LUCASII	0.55	8
VIBILIA ANTARCTICA	3.10	136
HYPERIELLA DILATATA	0.04	2
PRIMNO MACROPA	+	1
EUPHAUSIA SUPERBA	1.08	32
THYSANOESSA MACRURA	3.20	183
SAGITTA GAZELLAE	0.03	3
LIMACINA HELICINA	0.15	16
CLIO PYRAMIDATA	0.49	4
SALPA THOMPSONI (AGG)	98.92	580
SALPA THOMPSONI (SOL)	12.68	4

DATE: 26.11.82

HAUL: A13

NET: RMT-8

LAT: 63°29.9'S TOTAL WEIGHT: 3865.45 TOTAL COUNT: 11716

LONG: 62°45.1'E

	WEIGHT:	COUNT:
PERIPHYLLA PERIPHYLLA	3500.00	1
CALYCOPSIS BORCHGREVINKI	6.03	4
PEGANTHA SP.	5.39	5
SIPHONOPHORE NECTOPHORE	31.41	121
CTENOPHORE	0.16	3
VANADIS ANTARCTICA	0.42	2
RHYNCHONERELLA SP.	0.12	3
TOMOPTERIS CARPENTERI	1.46	3
TOMOPTERIS SP.	0.17	8
CALANUS PROPINQUUS	0.05	79
CALANOIDES ACUTUS	0.51	247
RHINCALANUS GIGAS	26.30	4162
EUCHIRELLA ROSTROMAGNA	0.98	56
EUCHAETA ANTARCTICA	0.09	9
HALOPTILUS OCELLATUS	0.19	42
COPEPOD INDET.	0.01	5
CYLLOPUS LUCASII	1.32	18
VIBILIA ANTARCTICA	3.10	136
PARATHEMISTO GAUDICHAUDI (BISP.)	0.15	1
HYPERIELLA DILATATA	0.01	1
PRIMNO MACROPA	0.10	1
EUPHAUSIA SUPERBA	1.79	36
THYSANDESSA MACRURA	195.88	5400
EUKROHNIA HAMATA	1.16	90
SAGITTA GAZELLAE	34.08	401
SAGITTA MARRI	0.03	7
LIMACINA HELICINA	0.56	15
CLIO PYRAMIDATA	7.13	76
SPONGIOBRANCHAEA AUSTRALIS	0.70	5
CLIONE LIMACINA	0.73	6
PSYCHROTEUTHIS SP.	0.29	3
GALITEUTHIS GLACIALIS	1.03	1
SALPA THOMPSONI (AGG)	25.99	743
SALPA THOMPSONI (SOL)	9.82	12
IHLEA SP.	8.23	12
ELECTRONA ANTARCTICA LARVA	0.04	2

DATE: 27.11.82

HAUL: A14

NET: RMT-8

LAT: 64°35.8'S

TOTAL WEIGHT: 171.42

TOTAL COUNT: 15853

LONG: 63°08.9'E

	WEIGHT:	COUNT:
CALYCOPSIS BORCHGREVINKI	4.62	6
SIPHONOPHORE NECTOPHORE	55.14	127
CTENOPHORE	2.81	2
VANADIS ANTARCTICA	5.13	7
RHYNCHONERELLA SP.	0.11	8
TOMOPTERIS CARPENTERI	0.48	1
TOMOPTERIS PLANKTONIS	0.01	1
TOMOPTERIS SP.	0.04	3
TRAVISIOPSIS LEVINSENI	0.06	2
OSTRACOD	+	1
*CALANUS PROPINQUUS	1.08	2070
*CALANOIDES ACUTUS	0.60	3072
*RHINCALANUS GIGAS	6.92	9489
*EUCHAETA ANTARCTICA	0.23	11
*HALOPTILUS OCELLATUS	0.57	102
*COPEPOD INDET	0.02	11
CYLLOPUS LUCASII	3.39	3
VIBILIA ANTARCTICA	0.05	3
HYPEROCHE SP.	0.10	1
PRIMNO MACROPA	0.75	12
EUSIRUS SP.	0.07	1
EUPHAUSIA SUPERBA	0.46	7
THYSANOESSA MACRURA	11.31	458
EUKROHNSIA HAMATA	3.13	221
SAGITTA GAZELLAE	18.07	174
SAGITTA MARRI	0.11	5
TRICHOTROPIDAE LARVA	0.66	1
LIMACINA HELICINA	+	4
CLIO PYRAMIDATA	1.24	31
SPONGIOBRANCHAEA AUSTRALIS	0.30	3
CLIONE LIMACINA	0.42	5
PSYCHROTEUTHIS SP.	0.05	1
CRANCHIIDAE INDET.	0.16	4
SALPA THOMPSONI (SOL)	53.31	5
LARVACEAN	0.02	1

DATE: 28.11.82

HAUL: A15

NET: RMT-8

LAT: 65°23.7'S

TOTAL WEIGHT: 456.86

TOTAL COUNT: 12382

LONG: 63°23.3'E

	WEIGHT:	COUNT:
CALYCOPSIS BORCHGREVINKI	7.43	3
DIPHYES ANTARCTICA	10.66	11
SIPHONOPHORE NECTOPHORE	133.20	401
SIPHONOPHORE BRACT	103.57	3843
CTENOPHORE	0.13	1
VANADIS ANTARCTICA	12.09	6
RHYNCHONERELLA SP.	0.05	2
TOMOPTERIS CARPENTERI	19.97	17
TOMOPTERIS PLANKTONIS	0.06	1
TOMOPTERIS SEPTENTRIONALIS	0.45	12
TOMOPTERIS SP.	0.08	4
*CALANUS PROPINQUUS	9.90	1730
*CALANOIDES ACUTUS	11.24	3923
*RHINCALANUS GIGAS	4.64	785
*EUCHIRELLA ROSTROMAGNA	0.09	9
*METRIDIA GERLACHEI	0.71	392
*HALOPTILUS OCELLATUS	0.27	54
CYLOPUS LUCASII	3.01	21
VIBILIA ANTARCTICA	0.36	14
HYPERIELLA DILATATA	0.07	7
HYPERIA MACROCEPHALA	0.14	1
PRIMNO MACROPA	0.47	5
EUPHAUSIA SUPERBA	0.27	1
THYSANOESSA MACRURA	10.55	495
EUKRONIA HAMATA	1.42	105
SAGITTA GAZELLAE	28.01	181
SAGITTA MARRI	0.03	1
TRICHOTROPIDAE LARVA	2.23	19
CLIO PYRAMIDATA	7.07	40
SPONGIOBRANCHAEA AUSTRALIS	0.36	4
CLIONE LIMACINA	0.25	3
PSYCHROTEUTHIS SP.	0.31	2
ALLUROTEUTHIS ANTARCTICUS	0.20	1
CRANCHIIDAE INDET	+	1
SALPA THOMPSONI (AGG)	31.48	267
SALPA THOMPSONI (SOL)	64.84	7
LARVACEAN (TAIL)	0.05	10
ELECTRONA ANTARCTICA LARVA	0.05	2

DATE: 28.11.82

HAUL: A16

NET: IYGPT

LAT: 66°01.9'S  
LONG: 63°50.9'E

TOTAL WEIGHT: 3642.32 TOTAL COUNT: 27236

	WEIGHT:	COUNT:
*SIPHONOPHORE BRACT	2004.77	25708
*CTENOPHORE	88.89	937
TOMOPTERIS CARPENTERI	0.80	1
*CALANOIDES ACUTUS	0.65	22
*EUCHAETA ANTARCTICA	1.37	44
CYLOPUS LUCASII	4.15	28
VIBILIA ANTARCTICA	0.03	2
HYPEROCHE SP.	0.42	4
PARATHEMISTO GAUDICHAUDI (COMP.)	0.08	1
HYPERIELLA DILATATA	0.01	1
HYPERIA MACROCEPHALA	3.37	9
PRIMNO MACROPA	0.05	1
THYSANOESSA MACRURA	0.04	2
*SAGITTA GAZELLAE	27.19	91
*TRICHOTROPIDAE LARVA	48.45	206
LIMACINA HELICINA	0.21	4
CLIO PYRAMIDATA	3.86	42
*SALPA THOMPSONI (AGG)	8.69	69
*SALPA THOMPSONI (SOL)	1447.88	61
NOTOLEPIS COATSI	0.89	2
RACOVITZIA GLACIALIS	0.96	1
CRYODRACO ANTARCTICUS	0.12	1



DATE: 28.11.82

HAUL: A17

NET: RMT-8

LAT: 66°03.4'S

TOTAL WEIGHT: 2761.18

TOTAL COUNT: 190500

LONG: 63°47.7'E

	WEIGHT:	COUNT:
*SIPHONOPHORE BRACT	1730.02	48499
*CTENOPHORE	100.76	1516
VANADIS ANTARCTICA	5.98	3
RHYNCHONERELLA SP.	0.02	1
TOMOPTERIS CARPENTERI	0.63	2
TOMOPTERIS PLANKTONIS	0.10	3
TOMOPTERIS SEPTENTRIONALIS	7.13	213
TOMOPTERIS SP.	1.50	89
POLYCHAETE INDET.	5.90	84
*CALANUS PROPINQUUS	36.21	5360
*CALANOIDES ACUTUS	316.59	123521
*RHINCALANUS GIGAS	0.28	112
*EUCHAETA ANTARCTICA	10.95	449
*METRIDIA GERLACHEI	15.72	8336
CYLOPUS LUCASII	4.38	28
VIBILIA ANTARCTICA	0.23	12
HYPEROCHE SP.	0.62	5
HYPERIELLA DILATATA	0.15	14
HYPERIA MACROCEPHALA	3.64	11
PRIMNO MACROPA	0.02	1
EUPHAUSIA SUPERBA	1.13	3
*THYSANOESEA MACRURA	4.90	535
*EUKROHNIA HAMATA	17.96	86
*SAGITTA GAZELLAE	1.40	84
*TRICHOTROPIDAE LARVA	86.73	702
*LIMACINA HELICINA	2.83	49
*CLIO PYRAMIDATA	10.55	188
SPONGIOBRANCHAEA AUSTRALIS	0.53	4
CLIONE LIMACINA	0.50	4
PSYCHROTEUTHIS SP.	2.91	1
ALLUROTEUTHIS ANTARCTICUS	21.13	1
CRANCHIIDAE INDET.	+	1
*SALPA THOMPSONI (AGG)	77.46	617
*SALPA THOMPSONI (SOL)	292.02	57
NOTOLEPIS COATSI (HEAD ONLY)	0.22	1
BATHYDRACONIDAE JUVENILE	0.08	1

DATE: 29.11.82

HAUL: A18

NET: RMT-8

LAT: 66°31.8'S TOTAL WEIGHT: 184.94 TOTAL COUNT: 5194

LONG: 62°51.8'E

	WEIGHT:	COUNT:
SIPHONOPHORE BRACT	46.28	2935
*CTENOPHORE	30.9	30
VANADIS ANTARCTICA	0.38	2
TOMOPTERIS SP.	0.06	1
*CALANUS PROPINQUUS	1.14	185
*CALANOIDES ACUTUS	3.99	1530
*RHINCALANUS GIGAS	0.01	2
*EUCHAETA ANTARCTICA	0.18	6
*METRIDIA GERLACHEI	0.39	203
CYLOPUS LUCASII	0.51	4
VIBILIA ANTARCTICA	0.42	7
HYPEROCHE SP.	0.55	6
HYPERIELLA DILATATA	0.12	11
HYPERIA MACROCEPHALA	2.92	12
EUPHAUSIA SUPERBA	9.27	13
EUPHAUSIA CRYSTALLOROPHIAS	1.27	6
THYSANOESSA MACRURA	0.26	13
EUKROHNIA SP.	0.05	3
SAGITTA GAZELLAE	4.04	13
SAGITTA MARRI	0.04	1
TRICHOTROPIDAE LARVA	13.60	103
CLIO PYRAMIDATA	1.96	6
CLIONE LIMACINA	0.48	4
SALPA THOMPSONI (AGG)	2.12	36
SALPA THOMPSONI (SOL)	57.63	46
TREMATOMUS SCOTTI	0.59	2
CHIONODRACO SP.	5.22	11
CHAENODRACO WILSONI	0.56	3

DATE: 29.11.82

HAUL: A19

NET: RMT-8

LAT: 66°52.2'S

TOTAL WEIGHT: 238.85

TOTAL COUNT: 5434

LONG: 62°52.1'E

	WEIGHT:	COUNT:
KOELLIKERINA MAASI	0.06	2
CALYCOPSIS BORCHGREVINKI	0.08	2
SIPHONOPHORE NECTOPHORE	22.04	73
SIPHONOPHORE BRACT	11.63	376
CTENOPHORE	5.08	63
POLYCHAETE INDET.	0.03	1
*CALANUS PROPINQUUS	5.16	925
*CALANOIDES ACUTUS	1.69	646
*RHINCALANUS GIGAS	0.03	6
*METRIDIA GERLACHEI	0.13	47
CYLOPUS LUCASII	1.11	7
VIBILIA ANTARCTICA	0.02	1
HYPEROCHE SP.	0.22	4
HYPERIELLA DILATATA	0.05	6
HYPERIA MACROCEPHALA	0.68	2
PRIMNO MACROPA	0.04	1
HYPERIID INDET.	0.01	1
EUSIRUS SP.	0.99	2
?ORCHOMENE SP.	0.53	7
GAMMARID INDET.	0.31	2
*EUPHAUSIA CRYSTALLOROPHIAS	165.93	3008
THYSANOESEA MACRURA	0.08	4
EUPHAUSIID INDET.	0.20	46
EUKROHNIA HAMATA	0.10	13
SAGITTA GAZELLAE	4.69	37
TRICHOTROPIDAE LARVA	2.82	108
SPONGIOBRANCHAEA AUSTRALIS	1.71	14
CLIONE LIMACINA	0.15	1
SALPA THOMPSONI (AGG)	1.52	31
SALPA THOMPSONI (SOL)	10.33	2
PLEURAGRAMMA ANTARCTICUM	0.21	1
CHIONODRACO SP.	2.31	2

DATE: 30.11.82

HAUL: A20

NET: RMT-8

LAT: 66°52.6'S

TOTAL WEIGHT: 154.40

TOTAL COUNT: 479

LONG: 62°57.2'E

	WEIGHT:	COUNT:
SIPHONOPHORE NECTOPHORE	7.35	21
SIPHONOPHORE BRACT	0.29	47
CTENOPHORE	32.54	1
CNIDARIAN INDET.	1.98	1
POLYCHAETE INDET.	0.31	2
CALANUS PROPINQUUS	0.38	71
CALANOIDES ACUTUS	0.17	68
EUCHAETA ANTARCTICA	0.04	4
METRIDIA GERLACHEI	+	2
CYLLOPUS LUCASII	0.79	7
VIBILIA ANTARCTICA	0.07	1
HYPEROCHE SP.	0.25	3
HYPERIELLA MACRONYX	0.13	4
HYPERIELLA DILATATA	0.14	16
PRIMNO MACROPA	0.04	1
EUSIRUS SP.	0.06	1
?ORCHOMENE SP.	0.43	3
GAMMARID INDET.	0.86	8
ANTARCTOMYSIS MAXIMA	46.48	65
SAGITTA GAZELLAE	5.29	19
TRICHOTROPIDAE LARVA	1.45	23
CLIO PYRAMIDATA	1.68	4
SPONGIOBRANCHAEA AUSTRALIS	0.50	2
CLIONE LIMACINA	0.22	1
SALPA THOMPSONI (AGG)	3.33	80
SALPA THOMPSONI (SOL)	27.38	17
TREMATOMUS SP.	2.55	3
PLEURAGRAMMA ANTARCTICUM	4.73	1
PRIONODRACO EVANSII	3.96	1
PAGETOPSIS MACROPTERUS	0.58	1
CHIONODRACO SP.	0.42	1

DATE: 3.12.82

HAUL: A22

NET: RMT-8

LAT: 67°13.4'S

TOTAL WEIGHT: 113.05

TOTAL COUNT: 5677

LONG: 66°12.3'E

	WEIGHT:	COUNT:
SIPHONOPHORE NECTOPHORE	0.62	2
SIPHONOPHORE BRACT	60.59	1267
CTENOPHORE	20.14	14
VANADIS ANTARCTICA	0.50	1
TOMOPTERIS PLANKTONIS	0.03	1
*CALANUS PROPINQUUS	11.76	2060
*CALANOIDES ACUTUS	3.84	1566
*RHINCALANUS GIGAS	0.12	19
*METRIDIA GERLACHEI	0.02	6
HYPEROCHE SP.	0.27	3
HYPERIELLA MACRONYX	0.04	1
HYPERIELLA DILATATA	0.02	2
EUPHAUSIA SUPERBA	1.17	6
EUPHAUSIA CRYSTALLOROPHIAS	1.97	61
THYSANOESSA MACRURA	3.16	605
EUPHAUSIID INDET.	0.03	3
SAGITTA GAZELLAE	0.11	2
TRICHOTROPIDAE LARVA	0.85	8
CLIO PYRAMIDATA	5.47	25
SPONGIOBRANCHAEA AUSTRALIS	1.02	9
CLIONE LIMACINA	0.53	6
SALPA SP.	0.18	2
CHIONODRACO SP.	0.60	7
FISH LARVA INDET.	0.01	1

DATE: 3.12.82

HAUL: A23

NET: RMT-8

LAT: 67°18.3'S

TOTAL WEIGHT: 340.54

TOTAL COUNT: 96

LONG: 65°33.8'E

	WEIGHT:	COUNT:
ECHINIPHIMEDIA SP.	0.55	2
PARIPHIMEDIELLA SP.	7.95	10
AMPELISCA SP.	2.32	12
EUSIRUS SP.	1.10	4
JASSA FALCATA	0.09	2
LEUCOTHOE SP.	0.26	2
?ORCHOMENE SP.	0.19	1
WALDECKIA OBESA	0.15	1
PROBOLOIDES SP.	0.02	1
GAMMARID INDET.	2.79	27
CHORISMUS ANTARCTICUS	49.72	21
PARELEDONE ADELIEANA	37.62	1
PARELEDONE HARRISSONI	91.30	1
PARELEDONE CHARCOTI	62.57	1
TREMATOMUS SCOTTI	3.13	3
TREMATOMUS LEPIDORHINUS	31.12	2
TREMATOMUS SP.	13.73	2
ARTEDIDRACO SP.	28.65	2
PRIONODRACO EVANSII	7.28	1

DATE: 3.12.82

HAUL: A24

NET: RMT-8

LAT: 67°18.3'S

TOTAL WEIGHT: 83.72

TOTAL COUNT: 913

LONG: 66°16.5'E

	WEIGHT:	COUNT:
CALYCOPSIS BORCHGREVINKI	32.48	11
LAODICEA PULCHRA	1.87	1
HALITREPHES MAASI	0.89	2
MEDUSA INDET.	0.39	8
DIPHYES ANTARCTICA	13.45	15
SIPHONOPHORE NECTOPHORE	10.82	50
SIPHONOPHORE BRACT	0.12	22
CTENOPHORE	0.84	12
VANADIS ANTARCTICA	1.07	2
CALANUS PROPINQUUS	0.80	146
CALANOIDES ACUTUS	1.21	443
RHINCALANUS GIGAS	0.05	7
EUCHAETA ANTARCTICA	+	1
METRIDIA GERLACHEI	0.13	75
HYPEROCHE SP.	0.44	4
HYPERIELLA DILATATA	0.09	11
HYPERIA MACROCEPHALA	0.70	3
PRIMNO MACROPA	0.12	2
EUSIRUS SP.	0.08	1
?ORCHOMENE SP.	0.12	1
EPIMERIELLA MACRONYX	0.02	1
EUPHAUSIA SUPERBA	0.69	1
EUPHAUSIA CRYSTALLGROPHIAS	0.44	4
EUKROHNIA HAMATA	0.09	8
SAGITTA GAZELLAE	15.24	68
CLIO PYRAMIDATA	0.12	2
CLIONE LIMACINA	0.17	1
SPONGIOBRANCHAEA AUSTRALIS	0.90	8
SALPA SP.	0.38	3

DATE: 4.12.82

HAUL: A25

NET: RMT-8

LAT: 66°48.4'S TOTAL WEIGHT: 129.76 TOTAL COUNT: 2249

LONG: 70°21.3'E

	WEIGHT:	COUNT:
SIPHONOPHORE BRACT	+	2
CTENOPHORE	11.22	10
GANADIS ANTARCTICA	7.36	6
TOMOPTERIS CARPENTERI	6.54	7
*CALANUS PROPINQUUS	3.43	600
*CALANOIDES ACUTUS	1.59	527
*EUCHAETA ANTARCTICA	2.41	86
*METRIDIA GERLACHEI	0.01	4
CYLOPUS LUCASII	1.24	7
HYPEROCHE SP.	0.09	1
HYPERIELLA MACRONYX	0.13	3
HYPERIELLA DILATATA	0.11	13
HYPERIA MACROCEPHALA	0.23	2
PRIMNO MACROPA	0.19	3
EUPHAUSIA SUPERBA	11.40	32
THYSANOESSA MACRURA	40.02	657
EUKROHNIA HAMATA	0.40	16
SAGITTA GAZELLAE	30.35	175
TRICHOTROPIDAE LARVA	0.81	4
CLIO PYRAMIDATA	11.87	91
SPONGIOBRANCHAEA AUSTRALIS	0.20	2
PSYCHROTEUTHIS SP.	0.12	1
ARTEDIDRACONIDAE LARVA	0.04	1



DATE: 5.12.82

HAUL: A26

NET: RMT-8

LAT: 66°38.7'S

TOTAL WEIGHT: 194.92

TOTAL COUNT: 14825

LONG: 72°49.1'E

	WEIGHT:	COUNT:
SIPHONOPHORE BRACT	70.74	860
CTENOPHORE	7.19	37
VANADIS ANTARCTICA	1.22	2
RHYNCHONERELLA SP.	0.07	3
TOMOPTERIS CARPENTERI	13.11	32
TOMOPTERIS PLANKTONIS	0.44	9
TOMOPTERIS SEPTENTRIONALIS	1.55	30
TOMOPTERIS SP.	0.36	10
*CALANUS PROPINQUUS	4.13	672
*CALANOIDES ACUTUS	24.54	10100
*EUCHAETA ANTARCTICA	0.81	32
*METRIDIA GERLACHEI	0.12	65
CYLOPUS LUCASII	0.33	2
PRIMNO MACROPA	0.09	2
EUPHAUSIA SUPERBA	0.25	1
THYSANOESSA MACRURA	42.92	2730
EUKROHNSIA HAMATA	0.37	19
SAGITTA GAZELLAE	17.51	73
LIMACINA HELICINA	0.66	49
CLIO PYRAMIDATA	4.23	59
SPONGIOBRANCHAEA AUSTRALIS	3.08	22
CLIONE LIMACINA	0.84	6
LARVACEAN	0.01	1
TREMATOMUS SP.	0.52	1
ARTEDIDRACONIDAE LARVA	0.35	9

DATE: 5.12.82

HAUL: A27

NET: RMT-8

LAT: 66°45.7'S TOTAL WEIGHT: 452.75 TOTAL COUNT: 8045

LONG: 73°04.3'E

	WEIGHT:	COUNT:
CTENOPHORE	8.75	45
VANADIS ANTARCTICA	1.99	2
TOMOPTERIS CARPENTERI	98.48	100
TOMOPTERIS PLANKTONIS	0.07	1
*CALANUS PROPINQUUS	10.84	1776
*CALANOIDES ACUTUS	12.51	4903
*METRIDIA GERLACHEI	1.00	408
CYLOPUS LUCASII	0.33	26
HYPEROCHE SP.	0.16	2
HYPERIELLA MACRONYX	0.04	2
HYPERIELLA DILATATA	0.15	16
HYPERIA MACROCEPHALA	1.61	4
PRIMNO MACROPA	0.78	12
? ORCHOMENE SP.	0.12	1
EUPHAUSIA SUPERBA	296.10	470
EUPHAUSIA CRYSTALLOROPHIAS	0.74	5
THYSANOESSA MACRURA	9.10	204
EUKROHNSIA HAMATA	0.12	6
SAGITTA GAZELLAE	0.79	4
LIMACINA HELICINA	+	10
CLIO PYRAMIDATA	7.05	34
SPONGIOBRANCHAEA AUSTRALIS	0.34	3
PSYCHROTEUTHIS SP.	0.04	1
LARVACEAN	+	1
TREMATOMUS SCOTTI	0.95	3
PLEURAGRAMMA ANTARCTICUM	0.57	2
ARTEDIDRACONIDAE LARVA	0.12	4

DATE: 8.12.82

HAUL: A28

NET: RMT-8

LAT: 68°34.6'S

TOTAL WEIGHT: 253.53

TOTAL COUNT: 3006

LONG: 72°05.4'E

	WEIGHT:	COUNT:
MEDUSA INDET.	0.03	2
CTENOPHORE	1.16	16
TOMOPTERIS SP.	0.98	5
CALANOIDES ACUTUS	0.02	8
METRIDIA GERLACHEI	+	1
HYPERIELLA MACRONYX	0.15	6
HYPERIELLA DILATATA	0.03	5
*EUPHAUSIA CRYSTALLOROPHIAS	239.30	2850
THYSANOESSA MACRURA	+	1
SAGITTA GAZELLAE	0.14	4
TRICHOTROPIDAE LARVA	2.15	22
LIMACINA HELICINA	0.20	5
CLIO PYRAMIDATA	1.01	10
PSYCHROTEUTHIS SP.	0.08	1
SALPA THOMPSONI (SOL)	8.22	66
CHIONODRACO SP.	0.06	4

DATE: 8.12.82

HAUL: A29

NET: RMT-8

LAT: 68°42.3'S

TOTAL WEIGHT: 216.25

TOTAL COUNT: 2767

LONG: 71°06.8'E

	WEIGHT:	COUNT:
CTENOPHORE	0.36	5
POLYCHAETE INDET.	0.04	1
CYLOPUS LUCASII	0.32	2
HYPERIELLA MACRONYX	0.02	1
HYPERIELLA DILATATA	0.03	3
EUSIRUS SP.	0.08	2
*EUPHAUSIA CRYSTALLOROPHIAS	188.92	2715
CLIO PYRAMIDATA	+	1
SALPA THOMPSONI (SOL)	26.20	21
CHANNICHTHYIDAE JUVENILE	0.24	12
FISH LARVA INDET.	0.04	4

DATE: 9.12.82

HAUL: A30

NET: RMT-8

LAT: 68°26.0'S

TOTAL WEIGHT: 2761.54

TOTAL COUNT: 2416

LONG: 71°40.8'E

	WEIGHT:	COUNT:
CTENOPHORE	1.25	19
CALANUS PROPINQUUS	0.03	6
CALANOIDES ACUTUS	0.11	39
METRIDIA GERLACHEI	0.01	9
HYPEROCHE SP.	0.01	1
HYPERIELLA MACRONYX	0.09	4
HYPERIELLA DILATATA	0.01	1
HYPERIA MACROCEPHALA	0.32	2
EUPHAUSIA CRYSTALLOROPHIAS	6.63	56
THYSANOESSA MACRURA	0.04	4
TRICHOTROPIDAE LARVA	2.08	17
LIMACINA HELICINA	+	6
*SALPA THOMPSONI (SOL)	2750.00	2236
BATHYDRACONIDAE JUVENILE	0.12	1
CRYODRACO ANTARCTICUS	0.15	2
CHIONODRACO SP.	0.36	14
CHAENODRACO WILSONI	0.48	1

DATE: 9.12.82

HAUL: A31

NET: RMT-8

LAT: 68°15.3'S

TOTAL WEIGHT: 139.62

TOTAL COUNT: 1050

LONG: 72°38.8'E

	WEIGHT:	COUNT:
MEDUSA INDET.	0.22	4
CTENOPHORE	1.25	3
HYPERIELLA MACRONYX	0.20	8
HYPERIELLA DILATATA	0.05	8
? ORCHOMENE SP.	0.02	1
EUPHAUSIA CRYSTALLOROPHIAS	25.82	351
THYSANOESSA MACRURA	0.12	13
TRICHOTROPIDAE LARVA	20.15	284
LIMACINA HELICINA	1.13	273
SALPA THOMPSONI (SOL)	81.66	65
TREMATOMUS SP.	1.88	4
PLEURAGRAMMA ANTARCTICUM	4.49	16
BATHYDRACONIDAE JUVENILE	0.18	2
CRYODRACO ANTARCTICUS	0.19	3
CHIONODRACO SP.	0.41	3
CHAENODRACO WILSONI	1.57	4
CHANNICHTHYIDAE JUVENILE	0.22	6
FISH LARVA INDET.	0.03	2

DATE: 9.12.82

HAUL: A32

NET: RMT-8

LAT: 68°06.4'S

TOTAL WEIGHT: 1022.76

TOTAL COUNT: 14507

LONG: 71°58.7'E

	WEIGHT:	COUNT:
CTENOPHORE	3.95	96
TOMOPTERIS CARPENTERI	0.72	1
CALANUS PROPINQUUS	0.02	4
CALANOIDES ACUTUS	0.36	117
METRIDIA GERLACHEI	0.02	14
CYLOPUS LUCASII	0.17	1
HYPEROCHE SP.	0.26	3
HYPERIELLA MACRONYX	0.01	1
HYPERIELLA DILATATA	0.06	6
HYPERIA MACROCEPHALA	0.25	1
*EUPHAUSIA CRYSTALLOROPHIAS	1006.00	14144
THYSANOESSA MACRURA	0.02	5
TRICHOTROPIDAE LARVA	3.68	36
CLIO PYRAMIDATA	0.11	2
SALPA THOMPSONI (SOL)	4.55	25
PLEURAGRAMMA ANTARCTICUM	0.33	1
ARTEDIDRACONIDAE LARVA	0.10	2
PAGETOPSIS MACROPTERUS	0.39	2
CHIONODRACO SP.	1.03	3
CHANNICHTHYIDAE JUVENILE	0.68	39
FISH LARVA INDET.	0.05	4

DATE: 10.12.82

HAUL: A33

NET: RMT-8

LAT: 67°16.9'S

TOTAL WEIGHT: 2614.36

TOTAL COUNT: 6181

LONG:73°04.1'E

	WEIGHT:	COUNT:
CYLLOPUS LUCASII	0.71	4
HYPERIELLA DILATATA	0.01	1
HYPERIA MACROCEPHALA	0.67	4
HYPERIA SP.	0.04	1
EUSIRUS SP.	0.28	4
*EUPHAUSIA SUPERBA	2480.00	5850
*EUPHAUSIA CRYSTALLOROPHIAS	50.00	236
THYSANOESSA MACRURA	+	1
TRICHOTROPIDAE LARVA	1.01	28
PLEURAGRAMMA ANTARCTICUM	81.64	52

DATE: 10.12.82

HAUL: A34

NET: RMT-8

LAT: 67°10.3'S

TOTAL WEIGHT: 7901.49

TOTAL COUNT: 16698

LONG:72°29.2'E

	WEIGHT:	COUNT:
HYPEROCHE SP.	0.10	1
HYPERIELLA DILATATA	0.01	1
HYPERIA MACROCEPHALA	0.54	1
EUSIRUS SP.	0.07	1
? ORCHOMENE SP.	0.07	1
*EUPHAUSIA SUPERBA	7890.00	16600
*EUPHAUSIA CRYSTALLOROPHIAS	10.00	90
CLIO PYRAMIDATA	+	1
TREMATOMUS SCOTTI	0.39	1
PLEURAGRAMMA ANTARCTICUM	0.31	1

DATE: 10.12.82

HAUL: A35

NET: RMT-8

LAT: 66°53.4'S

TOTAL WEIGHT: 195.48

TOTAL COUNT: 2224

LONG: 72°56.8'E

	WEIGHT:	COUNT:
SIPHONOPHORE BRACT	+	1
CTENOPHORE	154.93	25
VANADIS ANTARCTICA	2.25	2
TOMOPTERIS CARPENTERI	13.58	9
TOMOPTERIS SEPTENTRIONALIS	0.08	2
*CALANUS PROPINQUUS	8.04	1426
*CALANOIDES ACUTUS	0.87	483
*RHINCALANUS GIGAS	0.55	40
*EUCHAETA ANTARCTICA	0.12	8
*METRIDIA GERLACHEI	0.16	71
HYPEROCHE SP.	0.07	1
HYPERIELLA MACRONYX	0.01	1
HYPERIELLA DILATATA	0.01	2
HYPERIA MACROCEPHALA	0.57	1
PRIMNO MACROPA	0.27	4
EUPHAUSIA SUPERBA	2.42	6
EUPHAUSIA CRYSTALLOROPHIAS	0.11	1
THYSANOESSA MACRURA	1.63	59
EUKROHNIA HAMATA	0.11	6
SAGITTA GAZELLAE	3.53	11
LIMACINA HELICINA	+	18
CLIO PYRAMIDATA	5.92	45
CLIONE LIMACINA	0.13	1
LARVACEAN	0.12	1

DATE: 11.12.82

HAUL: A36

NET: RMT-8

LAT: 66°28.2'S

TOTAL WEIGHT: 66.69

TOTAL COUNT: 2640

LONG: 73°38.4'E

	WEIGHT:	COUNT:
SIPHONOPHORE BRACT	6.28	59
CTENOPHORE	5.84	40
VANADIS ANTARCTICA	0.13	1
TOMOPTERIS SEPTENTRIONALIS	0.09	1
*CALANUS PROPINQUUS	5.99	1074
*CALANOIDES ACUTUS	3.15	1122
PRIMNO MACROPA	0.06	1
HYPERIID INDET.	0.03	1
EUPHAUSIA SUPERBA	35.91	57
THYSANOESSA MACRURA	1.99	183
EUKROHNIA HAMATA	0.09	2
SAGITTA GAZELLAE	5.54	19
LIMACINA HELICINA	0.46	60
CLIO PYRAMIDATA	0.71	10
SALP INDET. (SOL)	0.29	9
LARVACEAN	0.13	1



DATE: 11.12.82

HAUL: A37

NET: RMT-8

LAT: 66°43.2'S

TOTAL WEIGHT: 217.52

TOTAL COUNT: 4288

LONG: 73°59.7'E

	WEIGHT:	COUNT:
SIPHONOPHORE	5.69	60
CTENOPHORE	23.01	INDET
UANADIS SP.	0.11	1
RHYNCHONERELLA SP.	0.01	1
TOMOPTERIS CARPENTERI	2.31	4
TOMOPTERIS SEPTENTRIONALIS	0.13	1
TOMOPTERIS SP.	0.34	4
*CALANUS PROPINQUUS	8.92	1450
*CALANOIDES ACUTUS	3.41	1409
*EUCHAETA ANTARCTICA	0.03	3
CYLOPUS LUCASII	0.18	1
PRIMNO MACROPA	0.68	9
EUPHAUSIA SUPERBA	124.89	277
THYSANOESSA MACRURA	23.88	923
EUKROHNIA HAMATA	0.22	11
SAGITTA GAZELLAE	21.50	103
TRICHOTROPIDAE LARVA	0.08	2
LIMACINA HELICINA	0.11	16
CLIO PYRAMIDATA	0.18	1
SPONGIOBRANCHAEA AUSTRALIS	1.39	8
CLIGNE LIMACINA	0.34	2
PLEURAGRAMMA ANTARCTICUM	0.08	1
ARTEDIDRACONIDAE LARVA	0.03	1

DATE: 11.12.82

HAUL: A38

NET: RMT-8

LAT: 66°57.8'S

TOTAL WEIGHT: 27350.58

TOTAL COUNT: 64685

LONG: 74°11.6'E

	WEIGHT:	COUNT:
HYPEROCHE SP.	0.08	1
HYPERIELLA MACRONYX	0.02	1
HYPERIA MACROCEPHALA	0.48	1
*EUPHAUSIA SUPERBA	27350.00	64682

DATE: 12.12.82

HAUL: A39

NET: RMT-8

LAT: 69°00.5S

TOTAL WEIGHT: 2659.81

TOTAL COUNT: 31636

LONG: 74°04.4'E

	WEIGHT:	COUNT:
HALITREPHES MAASI	0.33	1
CTENOPHORE	1.72	13
HYPEROCHE SP.	0.07	1
HYPERIELLA MACRONYX	0.04	2
HYPERIELLA DILATATA	0.01	1
HYPERIA MACROCEPHALA	0.28	1
*EUPHAUSIA CRYSTALLOROPHIAS	2650.00	31580
SAGITTA GAZELLAE	0.09	1
CLIO PYRAMIDATA	0.09	1
CLIONE LIMACINA	0.09	1
GALITEUTHIS GLACIALIS	0.92	1
SALPA THOMPSONI (SOL)	3.53	21
PLEURAGRAMMA ANTARCTICUM	2.49	9
CRYODRACO ANTARCTICUS	0.06	1
FISH LARVA INDET.	0.09	2

DATE: 12.12.82

HAUL: A40

NET: RMT-8

LAT: 69°26.3'S

TOTAL WEIGHT: 4505.50

TOTAL COUNT: 62931

LONG: 74°27.5'E

	WEIGHT:	COUNT:
CTENOPHORE	4.94	92
HYPEROCHE SP.	0.06	1
HYPERIELLA MACRONYX	0.06	2
HYPERIELLA DILATATA	0.03	4
EUPHAUSIA SUPERBA	0.46	1
*EUPHAUSIA CRYSTALLOROPHIAS	4259.26	62437
SAGITTA GAZELLAE	0.10	1
TRICHOTROPIDAE LARVA	0.25	4
GALITEUTHIS GLACIALIS	0.20	1
SALPA THOMPSONI (SOL)	14.92	156
PLEURAGRAMMA ANTARCTICUM	223.50	204
BATHYDRACONIDAE JUVENILE	0.01	1
PAGETOPSIS MACROPTERUS	0.12	1
CRYODRACO ANTARCTICUS	0.79	11
CHIONODRACO SP.	0.07	1

DATE: 13.12.82

HAUL: A41

NET: RMT-8

LAT: 69°00.7'S  
LONG: 75°48.7'E

TOTAL WEIGHT: 857.08

TOTAL COUNT: 10505

	WEIGHT:	COUNT:
SIPHONOPHORE NECTOPHORE	0.84	2
CTENOPHORE	0.67	17
HYPERIELLA MACRONYX	0.08	5
HYPERIELLA DILATATA	0.06	8
HYPERIA MACROCEPHALA	0.22	1
*EUPHAUSIA CRYSTALLOROPHIAS	819.00	10174
THYSANOESSA MACRURA	0.06	1
EUKROHNIA HAMATA	0.01	1
SAGITTA GAZELLAE	4.84	4
TRICHOTROPIDAE LARVA	0.20	8
SALPA THOMPSONI (AGG)	22.76	244
PLEURAGRAMMA ANTARCTICUM	6.42	26
CHIONODRACO SP.	1.68	9
CRYODRACO ANTARCTICUS	0.20	4
CHANNICHTHYIDAE LARVA	0.06	1

DATE: 13.12.82

HAUL: A42

NET: RMT-8

LAT: 68°33.6'S  
LONG: 77°01.5'E

TOTAL WEIGHT: 908.29

TOTAL COUNT: 9475

	WEIGHT:	COUNT:
SIPHONOPHORE BRACT	+	1
CTENOPHORE	28.64	INDET
CYLOPUS LUCASII	0.53	3
HYPERIELLA MACRONYX	0.63	2
HYPERIELLA DILATATA	0.12	17
HYPERIA MACROCEPHALA	0.95	3
*EUPHAUSIA SUPERBA	32.16	189
*EUPHAUSIA CRYSTALLOROPHIAS	760.00	9064
TRICHOTROPIDAE LARVA	0.77	13
LIMACINA HELICINA	+	5
SALPA THOMPSONI (SOL)	76.02	61
PLEURAGRAMMA ANTARCTICUM	7.14	17
CHIONODRACO SP.	1.33	100

DATE: 13.12.82

HAUL: A43

NET: RMT-8

LAT: 67°56.1'S

TOTAL WEIGHT: 3799.81

TOTAL COUNT: 28315

LONG: 76°57.8'E

	WEIGHT:	COUNT:
CTENOPHORE	0.10	2
HYPEROCHE SP.	0.06	1
HYPERIELLA DILATATA	0.02	3
EUSIRUS SP.	0.05	1
*EUPHAUSIA SUPERBA	150.00	660
*EUPHAUSIA CRYSTALLOROPHIAS	3600.00	27250
*THYSANOESSA MACRURA	14.00	120
SAGITTA GAZELLAE	0.27	3
TRICHOTROPIDAE LARVA	0.08	2
CLIO PYRAMIDATA	+	1
SALPA THOMPSONI (SOL)	23.07	224
PLEURAGRAMMA ANTARCTICUM	11.79	42
CHIONODRACO SP.	0.25	3
CRYODRACO ANTARCTICUS	0.07	1
CHANNICHTHYIDAE JUVENILE	0.05	2

DATE: 13.12.82                      HAUL: A44                      NET: BONGO I  
 LAT: 67°57.1'S      TOTAL WEIGHT: 33.60      TOTAL COUNT: 1369  
 LONG: 77°09.8'E

	WEIGHT:	COUNT:
*CALANUS PROPINQUUS	0.27	89
*CALANOIDES ACUTUS	0.83	500
*RHINCALANUS GIGAS	0.01	2
*EUCHAETA ANTARCTICA	0.13	10
*METRIDIA GERLACHEI	0.69	375
HYPERIELLA DILATATA	0.02	3
EUSIRUS SP.	0.06	1
EUPHAUSIA SUPERBA	1.17	6
EUPHAUSIA CRYSTALLOROPHIAS	30.06	289
EUKROHNIA HAMATA	0.04	1
LIMACINA HELICINA	0.07	89
CLIO PYRAMIDATA	0.07	1
CHIONODRACO SP.	0.18	3

DATE: 13.12.82                      HAUL: A44                      NET: BONGO II  
 LAT: 67°57.1'S      TOTAL WEIGHT: 42.92      TOTAL COUNT: 1259  
 LONG: 77°09.8'E

	WEIGHT:	COUNT:
SIPHONOPHORE NECTOPHORE	0.62	2
*CALANUS PROPINQUUS	0.19	52
*CALANOIDES ACUTUS	0.56	354
*RHINCALANUS GIGAS	0.02	5
*EUCHAETA ANTARCTICA	0.12	12
*METRIDIA GERLACHEI	0.66	356
HYPERIELLA DILATATA	0.02	3
EUPHAUSIA SUPERBA	2.59	10
EUPHAUSIA CRYSTALLOROPHIAS	37.98	390
THYSANOESSA MACRURA	0.06	3
EUKROHNIA HAMATA	0.03	3
LIMACINA HELICINA	0.01	69
CLIO PYRAMIDATA	+	1
CHIONODRACO SP.	0.06	1

DATE: 14.12.82

HAUL: A45

NET: RMT-8

LAT: 67°30.2'S

TOTAL WEIGHT: 130.29

TOTAL COUNT: 126

LONG: 79°10.9'E

	WEIGHT:	COUNT:
SIPHONOPHORE NECTOPHORE	0.37	2
HYPEROCHE SP.	0.10	2
HYPERIELLA MACRONYX	0.17	3
EUPHAUSIA SUPERBA	0.42	6
EUPHAUSIA CRYSTALLOROPHIAS	0.23	6
TRICHOTROPIDAE LARVA	0.17	2
LIMACINA HELICINA	+	1
SALPA THOMPSONI (SOL)	128.83	103
FISH LARVA INDET.	+	1

DATE: 14.12.82

HAUL: A46

NET: RMT-8

LAT: 67°33.4'S

TOTAL WEIGHT: 10187.70

TOTAL COUNT: 41798

LONG: 78°15.1'E

	WEIGHT:	COUNT:
CYLLOPUS LUCASII	0.19	1
? ORCHOMENE SP.	0.16	2
*EUPHAUSIA SUPERBA	5660.00	18430
*EUPHAUSIA CRYSTALLOROPHIAS	4510.00	23276
*THYSANDESSA MACRURA	2.00	45
SPONGIOBRANCHAEA AUSTRALIS	0.16	1
*PLEURAGRAMMA ANTARCTICUM	14.36	42
BATHYDRACONIDAE JUVENILE	0.83	1

DATE: 15.12.82                      HAUL: A48                      NET: RMT-8  
 LAT: 67°31.5'S      TOTAL WEIGHT: 32.69      TOTAL COUNT: 491

	WEIGHT:	COUNT:
PHIALIDIUM SIMPLEX	0.04	2
SIPHONOPHORE NECTOPHORE	0.82	5
SIPHONOPHORE BRACT	0.35	80
CTENOPHORE	1.05	4
TOMOPTERIS PLANKTONIS	0.01	1
OSTRACOD	+	1
CALANUS PROPINQUUS	0.01	3
CALANOIDES ACUTUS	0.38	155
RHINCALANUS GIGAS	0.05	7
METRIDIA GERLACHEI	+	3
HYPERIELLA DILATATA	0.04	5
? ORCHOMENE SP.	0.21	1
EUPHAUSIA SUPERBA	19.85	28
EUPHAUSIA CRYSTALLOROPHIAS	6.29	58
THYSANODESSA MACRURA	2.60	98
EUKROHNIA HAMATA	0.24	21
SAGITTA GAZELLAE	0.48	10
TRICHOTROPIDAE LARVA	0.24	4
LIMACINA HELICINA	+	4
CHANNICHTHYIDAE JUVENILE	0.03	2

DATE: 15.12.82                      HAUL: A49                      NET: RMT-8  
 LAT: 67°31.2'S      TOTAL WEIGHT: 18501.16      TOTAL COUNT: 42803  
 LONG74°57.9'E

	WEIGHT:	COUNT:
HYPERIA MACROCEPHALA	0.76	2
? ORCHOMENE SP.	0.42	1
*EUPHAUSIA SUPERBA	18467.00	42660
*EUPHAUSIA CRYSTALLOROPHIAS	33.00	140

DATE: 15.12.82                      HAUL: A50                      NET: RMT-8  
 LAT: 67°31.1'S                      TOTAL WEIGHT: 14.82                      TOTAL COUNT: 278  
 LONG: 74°58.4'E

	WEIGHT:	COUNT:
SIPHONOPHORE *NECTOPHORE	4.27	17
SIPHONOPHORE BRACT	0.21	41
CALANUS PROPINQUUS	0.02	7
CALANOIDES ACUTUS	0.15	53
RHINCALANUS GIGAS	0.01	2
METRIDIA GERLACHEI	0.05	25
? ORCHOMENE SP.	0.02	1
EUPHAUSIA SUPERBA	2.09	4
EUPHAUSIA CRYSTALLOROPHIAS	6.84	69
THYSANOESSA MACRURA	+	1
EUKROHNIA HAMATA	0.21	36
SAGITTA GAZELLAE	0.88	19
TRICHOPTROPIDAE LARVA	0.04	1
CRANCHIIDAE INDET.	0.02	1
CHANNICHTHYIDAE JUVENILE	0.01	1

DATE: 15.12.82                      HAUL: A51                      NET: RMT-8  
 LAT: 67°31.6'S                      TOTAL WEIGHT: 4500.56                      TOTAL COUNT: 8960  
 LONG 74°53.6'E

	WEIGHT:	COUNT:
*EUPHAUSIA SUPERBA	4463.00	8790
*EUPHAUSIA CRYSTALLOROPHIAS	34.30	150
*PLEURAGRAMMA ANTARCTICUM	3.24	18
CHANNICHTHYIDAE JUVENILE	0.02	2



DATE: 15.12.82

HAUL: A52

NET: RMT-8

LAT: 67°30.3'S

TOTAL WEIGHT: 9.18

TOTAL COUNT: 354

LONG: 74°53.8'E

	WEIGHT:	COUNT:
PHIALIDIUM SIMPLEX	0.24	5
SIPHONOPHORE NECTOPHORE	1.62	24
SIPHONOPHORE BRACT	0.24	4
CTENOPHORE	0.04	1
VANADIS ANTARCTICA	0.07	1
RHYNCHONERELLA SP.	0.08	2
CALANUS PROPINQUUS	0.03	7
CALANOIDES ACUTUS	0.52	221
RHINCALANUS GIGAS	0.02	7
METRIDIA GERLACHEI	+	3
HYPERIELLA MACRYONYX	0.03	2
HYPERIELLA DILATATA	0.05	5
? ORCHOMENE SP.	0.02	1
EUPHAUSIA SUPERBA	4.52	5
THYSANOESSA MACRURA	+	2
EUKROHNSIA HAMATA	0.32	43
SAGITTA GAZELLAE	0.17	5
TRICHOTROPIDAE LARVA	0.97	8
LIMACINA HELICINA	+	3
SPONGIOBRANCHAEA AUSTRALIS	0.12	2
SALPA THOMPSONI (SOL)	0.07	1
CRYODRACO ANTARCTICUS	0.05	2

DATE: 15.12.82

HAUL: A53

NET: RMT-8

LAT: 67°30.5'S  
LONG: 74°57.1'E

TOTAL WEIGHT: 16.73

TOTAL COUNT: 732

	WEIGHT:	COUNT:
PANDEA RUBRA	0.04	1
SIPHONOPHORE NECTOPHORE	2.69	20
SIPHONOPHORE BRACT	0.48	104
CALANUS PROPINQUUS	+	2
CALANOIDES ACUTUS	0.76	349
RHINCANALUS GIGAS	0.06	10
METRIDIA GERLACHEI	0.01	7
HYPERIELLA MACRONYX	0.05	2
HYPERIELLA DILATATA	0.02	4
EUPHAUSIA SUPERBA	7.46	7
EUPHAUSIA CRYSTALLOROPHIAS	2.29	54
THYSANOESSA MACRURA	0.39	38
EUKROHNIA HAMATA	0.95	91
SAGITTA GAZELLAE	1.22	29
TRICHOTROPIDAE LARVA	0.04	1
LIMACINA HELICINA	+	8
CLIONE LIMACINA	0.25	1
FISH LARVA INDET.	0.02	4

DATE: 15.12.82

HAUL: A54

NET: RMT-8

LAT: 67°33.4'S  
LONG: 74°50.0'E

TOTAL WEIGHT: 1102.54

TOTAL COUNT: 3116

	WEIGHT:	COUNT:
HYPEROCHE SP.	0.07	1
*EUPHAUSIA SUPERBA	900.00	2300
*EUPHAUSIA CRYSTALLOROPHIAS	200.00	800
TREMATOMUS SCOTTI	0.84	2
CHIONODRACO SP.	1.16	1
CHANNICHTHYIDAE JUVENILE	0.47	12

DATE: 15.12.82

HAUL: A55

NET: RMT-8

LAT: 67°33.1'S

TOTAL WEIGHT: 29.09

TOTAL COUNT: 527

LONG:74°49.6'E

	WEIGHT:	COUNT:
CTENOPHORE	0.63	2
VANADIS ANTARCTICA	0.18	1
CALANUS PROPINQUUS	0.09	19
CALANOIDES ACUTUS	1.09	411
RHINCALANUS GIGAS	0.06	9
METRIDIA GERLACHEI	0.01	7
HYPERIELLA DILATATA	0.02	3
EUPHAUSIA SUPERBA	8.16	15
EUPHAUSIA CRYSTALLOROPHIAS	1.24	3
THYSANOESSA MACRURA	0.02	4
EUKROHNIA HAMATA	0.03	3
TRICHOTROPIDAE LARVA	1.08	26
LIMACINA HELICINA	+	3
PLEURAGRAMMA ANTARCTICUM	15.92	1
CHIONODRACO SP.	0.54	19
FISH LARVA INDET.	0.02	1

DATE: 15.12.82                      HAUL: A56                      NET: RMT-8  
 LAT: 67°33.0'S      TOTAL WEIGHT: 52.72      TOTAL COUNT: 681  
 LONG: 74°49.1'E

	WEIGHT:	COUNT:
PHIALIDIUM SIMPLEX	0.02	4
SIPHONOPHORE NECTOPHORE	6.41	42
SIPHONOPHORE BRACT	0.97	170
CTENOPHORE	0.55	2
VANADIS ANTARCTICA	0.08	1
CALANUS PROPINQUUS	0.07	15
CALANOIDES ACUTUS	0.48	210
RHINCALANUS GIGAS	0.05	6
EUCHAETA ANTARCTICA	+	1
METRIDIA GERLACHEI	+	2
HYPERIELLA DILATATA	0.03	4
? ORCHOMENE SP.	0.05	2
EUPHAUSIA SUPERBA	36.31	61
THYSANOESSA MACRURA	0.11	13
EUKROHNIA HAMATA	0.93	118
SAGITTA GAZELLAE	0.77	20
TRICHOTROPIDAE LARVA	0.09	1
LIMACINA HELICINA	+	4
PLEURAGRAMMA ANTARCTICUM	5.73	1
CHANNICHTHYIDAE JUVENILE	0.05	2
FISH LARVA INDET.	0.02	2

DATE: 15.12.82                      HAUL: A57                      NET: RMT-8  
 LAT: 67°33.2'S      TOTAL WEIGHT: 471.91      TOTAL COUNT: 2002  
 LONG: 74°44.9'E

	WEIGHT:	COUNT:
*EUPHAUSIA SUPERBA	355.00	1015
*EUPHAUSIA CRYSTALLOROPHIAS	112.00	945
LIMACINA HELICINA	+	2
CLIONE LIMACINA	0.37	3
PLEURAGRAMMA ANTARCTICUM	1.79	5
CRYODRACO ANTARCTICUS	0.07	1
CHIONODRACO SP	1.97	2
CHANNICHTHYIDAE JUVENILE	0.71	29

DATE: 15.12.82

HAUL: A58

NET: RMT-8

LAT: 67°33.8'S      TOTAL WEIGHT: 13.44  
LONG: 74°44.8'E

TOTAL COUNT: 528

	WEIGHT:	COUNT:
DIPLUMMARIS ANTARCTICA	0.19	1
PHIALIDIUM SIMPLEX	0.34	7
SIPHONOPHORE NECTOPHORE	0.48	2
SIPHONOPHORE BRACT	0.17	30
CTENOPHORE	2.81	1
TOMOPTERIS SP.	0.01	1
CALANUS PROPINQUUS	0.02	5
CALANOIDES ACUTUS	0.72	287
RHINCALANUS GIGAS	0.08	18
METRIDIA GERLACHEI	0.03	17
HYPERIELLA DILATATA	0.03	6
? ORCHOMENE SP.	0.32	4
EUPHAUSIA CRYSTALLOROPHIAS	2.27	19
THYSANOESSA MACRURA	0.05	5
EUKROHNIA HAMATA	0.09	12
TRICHOTROPIDAE LARVA	2.88	47
LIMACINA HELICINA	+	22
LARVACEAN	0.02	1
PLEURAGRAMMA ANTARCTICUM	0.69	2
CRYODRACO ANTARCTICUS	0.91	1
CHANNICHTHYIDAE JUVENILE	1.31	48
FISH LARVA INDET.	0.02	2

DATE: 15.12.82

HAUL: A59

NET: RMT-8

LAT: 67°35.1'S

TOTAL WEIGHT: 18.69

TOTAL COUNT: 309

LONG: 74°42.4'E

	WEIGHT:	COUNT:
KOELLIKERINA MAASI	0.04	1
PEGANTHA SP.	1.20	1
SIPHONOPHORE NECTOPHORE	+	1
SIPHONOPHORE BRACT	0.18	32
CALANUS PROPINQUUS	0.01	4
CALANOIDES ACUTUS	0.29	134
RHINCALANUS GIGAS	0.02	3
METRIDIA GERLACHEI	+	2
HYPERIELLA MACRONYX	0.02	1
? ORCHOMENE SP.	0.08	1
EUPHAUSIA SUPERBA	13.02	28
EUPHAUSIA CRYSTALLOROPHIAS	2.65	22
THYSANOESSA MACRURA	0.20	13
EUKROHNIA HAMATA	0.37	46
SAGITTA GAZELLAE	0.30	7
TRICHOTROPIDAE LARVA	0.11	2
LIMACINA HELICINA	+	6
CLIONE LIMACINA	0.14	1
CHANNICHTHYIDAE JUVENILE	0.06	4

DATE: 16.12.82

HAUL: A60

NET: RMT-8

LAT: 67°33.1'S

TOTAL WEIGHT: 6203.87

TOTAL COUNT: 9771

LONG: 74°40.0'E

	WEIGHT:	COUNT:
CYLOPUS LUCASII	0.27	1
HYPERIA MACROCEPHALA	0.07	1
? ORCHOMENE SP.	0.27	1
* EUPHAUSIA SUPERBA	6080.00	9150
* EUPHAUSIA CRYSTALLOROPHIAS	120.00	610
TREMATOMUS SCOTTI	0.44	1
PLEURAGRAMMA ANTARCTICUM	2.82	7

DATE: 16.12.82

HAUL: A61

NET: RMT-8

LAT: 67°33.8'S

TOTAL WEIGHT: 15.75

TOTAL COUNT: 495

LONG: 74°40.4'E

	WEIGHT:	COUNT:
PHIALIDIUM SIMPLEX	0.14	8
SIPHONOPHORE NECTOPHORE	+	2
SIPHONOPHORE BRACT	0.03	8
TOMOPTERIS PLANKTONIS	0.03	1
CALANOIDES ACUTUS	0.42	182
RHINCALANUS GIGAS	0.01	2
METRIDIA GERLACHEI	0.02	14
HYPERIELLA DILATATA	0.03	4
PRIMNO MACROPA	+	1
? ORCHOMENE SP.	1.53	14
GAMMARID INDET.	0.14	1
EUPHAUSIA SUPERBA	1.42	2
EUPHAUSIA CRYSTALLOROPHIAS	8.31	131
THYSANOESSA MACRURA	0.98	92
EUKROHNIA HAMATA	0.07	7
SAGITTA GAZELLAE	0.13	5
TRICHOTROPIDAE LARVA	0.20	4
LIMACINA HELICINA	+	11
CLIONE LIMACINA	0.09	1
PLEURAGRAMMA ANTARCTICUM	2.19	4
CRYODRACO ANTARCTICUS	0.01	1

DATE: 16.12.82                      HAUL: A62                      NET: RMT-8  
 LAT: 67°33.5'S      TOTAL WEIGHT: 41.18      TOTAL COUNT: 201  
 LONG:74°39.5'E

	WEIGHT:	COUNT:
SIPHONOPHORE BRACT	0.08	16
CTENOPHORE	+	1
CALANUS PROPINQUUS	0.02	6
CALANOIDES ACUTUS	0.10	40
RHINCALANUS GIGAS	0.02	3
METRIDIA GERLACHEI	0.03	17
HYPERIELLA DILATATA	0.01	1
? ORCHOMENE SP.	0.09	2
EUPHAUSIA SUPERBA	38.70	60
EUPHAUSIA CRYSTALLOROPHIAS	2.05	44
THYSANOESEA MACRURA	0.01	3
EUKROHNIA HAMATA	0.01	1
TRICHOTROPIDAE LARVA	0.06	1
LIMACINA HELICINA	+	6

DATE: 16.12.82                      HAUL: A63                      NET: IYGPT  
 LAT: 67°33.5'S      TOTAL WEIGHT: 176006.15      TOTAL COUNT: 225801  
 LONG:74°40.4'E

	WEIGHT:	COUNT:
*EUPHAUSIA SUPERBA	171700.00	215000
*EUPHAUSIA CRYSTALLOROPHIAS	500.00	2800
*PLEURAGRAMMA ANTARCTICUM	3800.00	8000
GYMNODRACO ACUTICEPS	6.15	1



DATE: 16.12.82

HAUL: A64

NET: RMT-8

LAT: 67°01.9'S

TOTAL WEIGHT: 10.62

TOTAL COUNT: 2502

LONG: 74°55.7'E

	WEIGHT:	COUNT:
CTENOPHORE	0.39	1
*CALANUS PROPINQUUS	4.43	694
*CALANOIDES ACUTUS	4.58	1675
*METRIDIA GERLACHEI	0.01	7
HYPERIELLA DILATATA	0.01	1
EUPHAUSIA SUPERBA	0.75	2
THYSANOESSA MACRURA	0.07	2
LIMACINA HELICINA	0.36	119
LARVACEAN	0.02	1

DATE: 16.12.82                      HAUL: A65                      NET: BONGO I  
 LAT: 67°01.9'S      TOTAL WEIGHT: 13.86      TOTAL COUNT: 2758

	WEIGHT:	COUNT:
SIPHONOPHORE NECTOPHORE	0.55	1
SIPHONOPHORE BRACT	0.16	1
OSTRACOD	+	2
*CALANUS PROPINQUUS	0.82	226
*CALANOIDES ACUTUS	7.10	2393
*RHINCALANUS GIGAS	0.19	19
*EUCHAETA ANTARCTICA	0.02	13
*METRIDIA GERLACHEI	0.06	50
HYPERIELLA MACRONYX	0.06	3
HYPERIELLA DILATATA	0.05	6
EUPHAUSIA SUPERBA	4.76	5
THYSANDESSA MACRURA	0.05	9
EUKROHNIA HAMATA	0.04	1
LIMACINA HELICINA	+	37
BATHYLAGUS ANTARCTICUS	+	1

DATE: 16.12.82                      HAUL: A65                      NET: BONGO II  
 LAT: 67°01.9'S      TOTAL WEIGHT: 13.32      TOTAL COUNT: 3095  
 LONG: 74°55.7'E

	WEIGHT:	COUNT:
PELAGOBIA LONGICIRRATA	0.10	1
OSTRACOD	+	6
*CALANUS PROPINQUUS	1.11	281
*CALANOIDES ACUTUS	7.49	2622
*RHINCALANUS GIGAS	0.03	6
*EUCHIRELLA ROSTROMAGNA	0.06	6
*EUCHAETA ANTARCTICA	0.02	12
*METRIDIA GERLACHEI	0.12	70
HYPERIELLA MACRONYX	0.06	
HYPERIELLA DILATATA	0.05	6
PRIMNO MACROPA	0.01	2
EUPHAUSIA SUPERBA	2.80	3
THYSANDESSA MACRURA	0.16	20
EUKROHNIA HAMATA	0.11	3
LIMACINA HELICINA	0.13	51
LARVACEAN	0.05	2
FISH LARVA INDET.	0.02	1

DATE: 16.12.82

HAUL: A66

NET: BONGO I

LAT: 66°46.4'S

TOTAL WEIGHT: 36.84

TOTAL COUNT: 8047

LONG: 74°41.3'E

	WEIGHT:	COUNT:
SIPHONOPHORE NECTOPHORE	1.16	10
SIPHONOPHORE BRACT	0.75	35
VANADIS ANTARCTICA	2.81	2
RHYNCHONERELLA SP.	0.27	1
TOMOPTERIS CARPENTERI	1.16	1
TOMOPTERIS SP.	0.11	2
OSTRACOD	0.22	85
*CALANUS PROFINQUUS	6.61	1354
*CALANOIDES ACUTUS	9.46	4846
*RHINCALANUS GIGAS	0.41	41
*EUCHAETA ANTARCTICA	1.96	228
*METRIDIA GERLACHEI	1.22	645
*HALOPTILUS OCELLATUS	0.08	41
CYLOPUS LUCASII	0.30	2
HYPERIELLA MACRONYX	0.01	1
HYPERIELLA DILATATA	0.13	17
PRIMNO MACROPA	+	1
EUPHAUSIA SUPERBA	1.29	26
THYSANOESSA MACRURA	5.83	651
SAGITTA GAZELLAE	0.70	1
SAGITTA MARRI	0.21	2
LIMACINA HELICINA	0.25	35
CLIO PYRAMIDATA	1.01	16
CLIO CHAPTALII	0.13	1
LARVACEAN	0.12	2
NOTOLEPIS COATSI	0.64	1

DATE: 16.12.82

HAUL: A66

NET: BONGO II

LAT: 66°46.4'S

TOTAL WEIGHT: 26.87

TOTAL COUNT: 6873

LONG: 74°41.3'E

	WEIGHT:	COUNT:
RHYNCHONERELLA SP.	0.09	1
TOMOPTERIS CARPENTERI	0.89	1
OSTRACOD	0.13	50
*CALANUS PROPINQUUS	7.92	1529
*CALANOIDES ACUTUS	7.46	3630
*RHINCALANUS GIGAS	0.65	80
*EUCHAETA ANTARCTICA	0.80	123
*METRIDIA GERLACHEI	1.52	841
*HALOPTILUS OCELLATUS	0.07	22
HYPERIELLA DILATATA	0.12	14
PRIMNO MACROPA	0.18	3
EUPHAUSIA SUPERBA	0.44	9
THYSANOESSA MACRURA	4.45	474
CHAETOGNATH INDET.	1.62	27
LIMACINA HELICINA	0.32	46
CLIO PYRAMIDATA	0.16	6
NOTOLEPIS COATSI	0.03	1
BATHYLAGUS ANTARCTICUS LARVA	+	1
FISH LARVA INDET.	0.02	1

DATE: 16.12.82

HAUL: A67

NET: RMT-8

LAT: 66°47.3'S

TOTAL WEIGHT: 110.38

TOTAL COUNT: 3668

LONG: 74°38.2'E

	WEIGHT:	COUNT:
CALYCOPSIS BORCHGREVINKI	7.26	13
PHIALIDIUM SIMPLEX	7.22	1
PEGANTHA SP.	4.94	1
SIPHONOPHORE NECTOPHORE	50.83	299
CTENOPHORE	0.08	2
VANADIS ANTARCTICA	2.05	2
TOMOPTERIS SP.	0.03	2
PELAGOBIA LONGICIRRATA	0.05	1
OSTRACOD	+	2
*CALANUS PROPINQUUS	1.00	230
*CALANOIDES ACUTUS	4.19	1938
*RHINCALANUS GIGAS	4.58	430
*EUCHIRELLA ROSTROMAGNA	0.27	18
*EUCHAETA ANTARCTICA	4.00	188
*METRIDIA GERLACHEI	0.03	24
*HALOPTILUS OCELLATUS	0.45	82
*COPEPOD INDET.	+	3
CYLOPOUS LUCASII	0.32	2
HYPEROCHE SP.	+	1
HYPERIELLA DILATATA	0.08	10
HYPERIA MACROCEPHALA	0.53	1
PRIMNO MACROPA	0.27	8
THYSANOESSA MACRURA	5.62	93
EUKROHNIA HAMATA	3.06	217
SAGITTA GAZELLAE	7.30	50
SAGITTA MARRI	0.32	23
LIMACINA HELICINA	+	6
CLIO PYRAMIDATA	0.35	6
SPONGIOBRANCHAEA AUSTRALIS	0.31	3
CLIONE LIMACINA	1.14	6
ALLUROTEUTHIS ANTARCTICUS	0.40	1
GALITEUTHIS GLACIALIS	2.18	4
SALPA THOMPSONI (SOL)	0.99	19
NOTOLEPIS COATSI	0.51	3
FISH EGG	0.02	1

DATE: 17.12.82

HAUL: A68

NET: BONGO I

LAT: 66°00.3'S  
LONG: 73°33.2'E

TOTAL WEIGHT: 23.34

TOTAL COUNT: 7608

	WEIGHT:	COUNT:
MEDUSA INDET.	0.08	1
SIPHONOPHORE NECTOPHORE	0.60	13
SIPHONOPHORE BRACT	+	2
CTENOPHORE	0.08	1
VANADIS ANTARCTICA	0.03	1
RHYNCHONERELLA SP.	0.04	1
TOMOPTERIS CARPENTERI	0.63	1
*CALANUS PROPINQUUS	4.29	1081
*CALANOIDES ACUTUS	10.42	4660
*RHINCALANUS GIGAS	0.16	40
*EUCHAETA ANTARCTICA	0.08	32
*METRIDIA GERLACHEI	2.31	1185
*HALOPTILUS OCELLATUS	0.32	32
HYPERIELLA DILATATA	0.01	2
PRIMNO MACROPA	0.08	1
THYSANOESSA MACRURA	3.59	514
EUKROHNIA HAMATA	0.28	31
SAGITTA GAZELLAE	0.11	3
LIMACINA HELICINA	+	4
CLIO PYRAMIDATA	0.06	1
LARVACEAN	0.17	2

DATE: 17.12.82

HAUL: A68

NET: BONGO II

LAT: 66°00.3'S  
LONG: 73°33.2'E

TOTAL WEIGHT: 33.66

TOTAL COUNT: 10994

	WEIGHT:	COUNT:
SIPHONOPHORE NECTOPHORE	1.41	32
CTENOPHORE	0.15	2
RHYNCHONERELLA SP.	0.14	2
*CALANUS PROPINQUUS	5.82	1432
*CALANOIDES ACUTUS	13.77	6161
*RHINCALANUS GIGAS	0.08	31
*EUCHAETA ANTARCTICA	0.24	47
*METRIDIA GERLACHEI	4.56	2510
*HALOPTILUS OCELLATUS	0.31	47
*COPEPOD INDET.	0.63	24
HYPERIELLA DILATATA	0.04	5
PRIMNO MACROPA	0.06	1
THYSANOESSA MACRURA	4.26	612
EUKROHNIA HAMATA	0.50	69
SAGITTA GAZELLAE	0.80	8
SAGITTA MARRI	0.63	1
LIMACINA HELICINA	0.23	9
CHANNICHTHYIDAE JUVENILE	0.03	1

DATE: 17.12.82

HAUL: A69

NET: RMT-8

LAT: 66°00.3'S  
LONG: 73°34.5'E

TOTAL WEIGHT: 53.59

TOTAL COUNT: 9201

	WEIGHT:	COUNT:
SIPHONOPHORE NECTOPHORE	0.19	16
SIPHONOPHORE BRACT	0.45	37
CTENOPHORE	2.02	30
VANADIS ANTARCTICA	0.34	1
TOMOPTERIS CARPENTERI	1.64	3
TOMOPTERIS SEPTENTRIONALIS	0.22	3
*CALANUS PROPINQUUS	0.77	125
*CALANOIDES ACUTUS	21.80	7243
*HALOPTILUS OCELLATUS	0.29	39
PRIMNO MACROPA	0.13	2
EUSIRUS SP.	0.80	1
EUPHAUSIA SUPERBA	3.05	4
THYSANOESSA MACRURA	14.98	1643
EUKROHNIA HAMATA	0.12	7
SAGITTA GAZELLAE	6.52	23
SAGITTA MARRI	0.03	1
SAGITTA SP.	0.02	1
TRICHOTROPIDAE LARVA	+	1
LIMACINA HELICINA	0.06	16
CLIONE LIMACINA	0.13	3
SALP INDET.	0.33	1
LARVACEAN	+	1

DATE: 17.12.82

HAUL: A70

NET: RMT-8

LAT: 65°03.9'S

TOTAL WEIGHT: 216.57

TOTAL COUNT: 15653

LONG: 72°06.9E

	WEIGHT:	COUNT:
MEDUSA INDET.	0.24	1
SIPHONOPHORE BRACT	99.56	394
CTENOPHORE	12.51	44
VANADIS ANTARCTICA	2.58	3
RHYNCHONERELLA SP.	+	1
TOMOPTERIS CARPENTERI	4.93	7
TOMOPTERIS SP.	0.14	5
*CALANUS PROPINQUUS	3.19	574
*CALANOIDES ACUTUS	29.03	13483
*RHINCALANUS GIGAS	0.21	21
*METRIDIA GERLACHEI	0.32	149
*HALOPTILUS OCELLATUS	0.43	32
CYLOPUS LUCASII	0.25	2
HYPERIELLA DILATA	0.11	12
PRIMNO MACROPA	0.72	11
THYSANOESSA MACRURA	3.21	399
EUKROHNIA HAMATA	0.28	14
SAGITTA GAZELLAE	18.90	137
LIMACINA HELICINA	0.25	3
CLIO PYRAMIDATA	37.05	341
CLIONE LIMACINA	1.29	12
PSYCHROTHEUTHIS SP.	0.84	4
IHLEA SP. (SOL)	0.03	1
TREMATOMUS SP.	0.51	3



DATE: 17.12.82

HAUL: A71

NET: BONGO I

LAT: 65°01.4'S

TOTAL WEIGHT: 53.63

TOTAL COUNT: 19768

LONG: 72°03.5'E

	WEIGHT:	COUNT:
PHIALIDIUM SIMPLEX	0.08	2
SIPHONOPHORE NECTOPHORE	0.58	15
SIPHONOPHORE BRACT	0.09	13
CTENOPHORE	0.05	1
RHYNCHONERELLA SP.	0.01	20
TOMOPTERIS SP.	0.09	3
PELAGOBIA LONGICIRRATA	0.01	13
*CALANUS PROPINQUUS	9.98	2285
*CALANOIDES ACUTUS	28.63	13424
*RHINCALANUS GIGAS	0.26	66
*EUCHIRELLA ROSTROMAGNA	0.13	13
*EUCHAETA ANTARCTICA	0.26	131
*METRIDIA GERLACHEI	7.36	3310
*HALOPTILUS OCELLATUS	0.26	53
*COPEPOD INDET.	0.01	13
CYLLOPUS LUCASII	0.11	1
HYPERIELLA DILATATA	0.16	19
THYSANOESSA MACRURA	1.83	247
EUKROHNIA HAMATA	0.15	44
SAGITTA GAZELLAE	1.77	24
CHAETOGNATH INDET.	0.05	10
LIMACINA HELICINA	0.12	34
CLIO PYRAMIDATA	0.76	17
CLIONE LIMACINA	0.04	1
IHLEA SP.	0.09	1
LARVACEAN	0.03	8

DATE: 17.12.82

HAUL: A71

NET: BONGO II

LAT: 65°01.4'S

TOTAL WEIGHT: 44.96

TOTAL COUNT: 15301

LONG: 72°03.5'E

	WEIGHT:	COUNT:
SIPHONOPHORE NECTOPHORE	5.77	18
SIPHONOPHORE BRACT	0.16	28
CTENOPHORE	0.04	6
RHYNCHONERELLA SP.	0.02	5
PELAGOBIA LONGICIRRATA	0.01	2
*CALANUS PROPINQUUS	7.31	1689
*CALANOIDES ACUTUS	20.39	10310
*RHINCALANUS GIGAS	0.51	72
*EUCHIRELLA ROSTROMAGNA	0.01	10
*EUCHAETA ANTARCTICA	0.21	93
*METRIDIA GERLACHEI	5.05	2606
*HALOPTILUS OCELLATUS	0.21	41
*COPEPOD INDET.	0.01	21
CYLOPOUS LUCASII	0.29	2
HYPERIELLA DILATATA	0.16	18
THYSANODESSA MACRURA	2.71	284
EUKROHNIA HAMATA	0.10	22
SAGITTA GAZELLAE	0.77	12
SAGITTA MARRI	0.01	1
LIMACINA HELICINA	+	44
CLIO PYRAMIDATA	0.68	15
CLIONE LIMACINA	0.23	1
ALLUROTEUTHIS ANTARCTICUS	0.31	1

DATE: 18.12.82

HAUL: A72

NET: BONGO I

LAT: 63°59.2'S

TOTAL WEIGHT: 56.66

TOTAL COUNT: 12446

LONG: 71°31.4'E

	WEIGHT:	COUNT:
MEDUSA INDET.	0.02	1
SIPHONOPHORE NECTOPHORE	1.26	39
SIPHONOPHORE BRACT	+	24
RHYNCHONERELLA SP.	0.03	9
TOMOPTERIS CARPENTERI	1.83	1
TOMOPTERIS SP.	0.01	2
POLYCHAETE INDET.	2.08	11
*CALANUS PROPINQUUS	5.19	1048
*CALANOIDES ACUTUS	25.20	10302
*RHINCALANUS GIGAS	1.48	286
*EUCHAETA ANTARCTICA	0.32	85
*METRIDIA GERLACHEI	0.16	116
*HALOPTILUS OCELLATUS	0.11	21
CYLOPUS LUCASII	+	1
VIBILIA ANTARCTICA	0.01	1
HYPERIELLA DILATATA	+	1
PRIMNO MACROPA	0.07	3
EUPHAUSIA SUPERBA	9.89	18
THYSANOESSA MACRURA	5.68	332
EUKROHNIA HAMATA	0.24	88
SAGITTA GAZELLAE	2.06	22
SAGITTA MARRI	0.05	8
CHAETOGNATH INDET.	0.03	7
LIMACINA HELICINA	0.25	8
CLIO PYRAMIDATA	0.45	4
IHLEA SP. (SOL)	0.21	4
MYCTOPHIDAE LARVA INDET.	0.01	1
LARVACEAN	0.02	3

DATE: 18.12.82

HAUL: A72

NET: BONGO II

LAT: 63°59.2'S

TOTAL WEIGHT: 45.74

TOTAL COUNT: 9907

LONG: 71°31.4'E

	WEIGHT:	COUNT:
SIPHONOPHORE NECTOPHORE	0.81	21
SIPHONOPHORE BRACT	+	13
RHYNCHONERELLA SP.	0.02	5
PELAGOBIA LONGICIRRATA	+	2
MAUPASIA SP.	+	2
*CALANUS PROPINQUUS	3.75	761
*CALANOIDES ACUTUS	18.66	8321
*RHINCALANUS GIGAS	1.25	198
*EUCHIRELLA ROSTROMAGNA	0.16	10
*EUCHAETA ANTARCTICA	0.47	96
*METRIDIA GERLACHEI	0.16	73
*HALOPTILUS OCELLATUS	0.10	10
CYLOPUS LUCASII	0.43	5
VIBILIA ANTARCTICA	0.01	1
HYPERIA MACROCEPHALA	0.21	1
EUPHAUSIA SUPERBA	6.98	11
THYSANOESSA MACRURA	4.06	227
EUKROHNSIA HAMATA	0.49	82
SAGITTA GAZELLAE	1.55	1
SAGITTA MARRI	0.04	4
CHAETOGNATH INDET.	0.05	14
LIMACINA HELICINA	0.30	9
CLIO PYRAMIDATA	0.15	2
CLIONE LIMACINA	0.06	1
SALPA SP. (SOL)	5.43	1
IHLEA RACOVITZAI	0.47	2
LARVACEAN	0.13	34

DATE: 18.12.82

HAUL: A73

NET: RMT-8

LAT: 64°00.6'S TOTAL WEIGHT: 24363.09 TOTAL COUNT: 50465

LONG: 71°29.3'E

	WEIGHT:	COUNT:
CTENOPHORE	369.90	1
VANADIS ANTARCTICA	0.98	1
*CALANUS PROPINQUUS	13.15	2350
*CALANOIDES ACUTUS	3.61	1700
*RHINCALANUS GIGAS	12.64	1700
*EUCHAETA ANTARCTICA	1.29	52
*METRIDIA GERLACHEI	0.05	26
EUSIRUS' SP.	2.62	1
*EUPHAUSIA SUPERBA	23945.00	44380
*THYSANOESSA MACRURA	3.90	230
EUKROHNIA HAMATA	0.07	7
SAGITTA GAZELLAE	0.40	4
CHAETOGNATH INDET.	0.08	4
SALPA THOMPSONI	9.40	9

DATE: 18.12.82

HAUL: A74

NET: RMT-8

LAT: 62°58.8'S  
LONG: 71°33.2'E

TOTAL WEIGHT: 325.41

TOTAL COUNT: 6793

	WEIGHT:	COUNT:
CTENOPHORE	0.11	4
VANADIS ANTARCTICA	2.24	7
TOMOPTERIS SP.	0.56	1
*CALANUS PROPINQUUS	0.39	76
*CALANOIDES ACUTUS	0.22	96
*RHINCALANUS GIGAS	2.32	236
CYLOPUS LUCASII	0.74	26
VIBILIA ANTARCTICA	0.12	3
HYPEROCHE SP.	0.11	1
PRIMNO MACROPA	0.12	2
EUPHAUSIA SUPERBA	0.20	5
*THYSANOESSA MACRURA	224.00	6050
SAGITTA GAZELLAE	12.40	111
SAGITTA MARRI	0.11	1
CHAETOGNATH INDET.	2.23	20
LIMACINA HELICINA	0.60	19
CLIO PYRAMIDATA	1.43	25
SPONGIOBRANCHAEA AUSTRALIS	0.25	2
CLIONE LIMACINA	0.80	6
SALPA THOMPSONI (AGG)	18.87	43
IHLEA RACOVITZAI (AGG)	35.16	18
IHLEA SP.	21.73	??
LARVALEAN	0.70	14

DATE: 18.12.82

HAUL: A75

NET: BONGO I

LAT: 63°00.1'S

TOTAL WEIGHT: 26.10

TOTAL COUNT: 5674

LONG: 71°30.0'E

	WEIGHT:	COUNT:
MEDUSA INDET.	0.03	1
SIPHONOPHORE NECTOPHORE	3.77	157
SIPHONOPHORE BRACKT	0.23	39
RHYNCHONERELLA SP.	0.05	14
TOMOPTERIS SEPTENTRIONALIS	0.11	5
TOMOPTERIS SP.	0.05	5
TRAVISIOPSIS LANCEOLATA	0.01	1
*CALANUS PROPINQUUS	0.22	44
*CALANOIDES ACUTUS	2.74	1374
*RHINCALANUS GIGAS	12.76	3115
*EUCHAETA ANTARCTICA	0.03	22
*METRIDIA GERLACHEI	0.02	16
*HALOPTILUS OCELLATUS	0.11	71
CYLOPUS LUCASII	0.05	4
PRIMNO MACROPA	0.03	5
THYSANOESSA MACRURA	2.15	56
EUKROHNIA HAMATA	1.62	580
SAGITTA GAZELLAE	1.26	49
SAGITTA MARRI	0.11	17
CHAETOGNATH INDET.	0.06	45
LIMACINA HELICINA	+	5
IHLEA RACOVITZAI (AGG)	0.56	8
LARVACEAN	0.13	41

DATE: 18.12.82

HAUL: A75

NET: BONGO II

LAT: 63°00.1'S

TOTAL WEIGHT: 29.67

TOTAL COUNT: 6169

LONG: 71°30.0'E

	WEIGHT:	COUNT:
MEDUSA INDET.	0.05	1
SIPHONOPHORE NECTOPHORE	3.73	161
SIPHONOPHORE BRACT	0.11	24
VANADIS ANTARCTICA	0.21	1
RHYNCHONERELLA SP.	0.08	9
TOMOPTERIS SEPTENTRIONALIS	0.09	4
TOMOPTERIS SP.	0.10	9
*CALANUS PROPINQUUS	0.07	19
*CALANOIDES ACUTUS	2.82	1456
*RHINCALANUS GIGAS	14.28	3458
*EUCHAETA ANTARCTICA	0.06	47
*METRIDIA GERLACHEI	0.02	9
*HALOPTILUS OCELLATUS	0.09	56
*COPEPOD INDET.	0.03	28
HYPERIELLA DILATATA	0.02	2
PRIMNO MACROPA	0.04	5
EUPHAUSIA SUPERBA	0.07	1
THYSANODESSA MACRURA	3.53	86
EUKROHNIA HAMATA	1.83	641
SAGITTA GAZELLAE	1.87	45
SAGITTA MARRI	0.15	16
CHAETOGNATH INDET.	0.12	49
LIMACINA HELICINA	+	4
IHLEA RACOVITZIA (AGG)	0.16	4
LARVACEAN	0.08	31
ELECTRONA ANTARCTICA LARVA	0.06	3



DATE: 18.12.82

HAUL: A76

NET: BONGO I

LAT: 62°00.3'S

TOTAL WEIGHT: 302.97

TOTAL COUNT: 5709

LONG:71°42.6'E

	WEIGHT:	COUNT:
*CALANUS PROPINQUUS	0.12	21
*CALANOIDES ACUTUS	0.95	710
*RHINCALANUS GIGAS	5.79	1264
*EUCHAETA ANTARCTICA	+	3
*METRIDIA GERLACHEI	0.02	12
PRIMNO MACROPA	0.04	3
EUPHAUSIA SUPERBA	294.66	3660
EUKROHNIA HAMATA	0.12	4
SAGITTA GAZELLAE	0.57	14
SAGITTA MARRI	0.08	2
LIMACINA HELICINA	0.18	10
CLIO PYRAMIDATA	0.11	2
SPONGIOBRANCHAEA AUSTRALIS	0.18	2
CLIONE LIMACINA	0.15	2

DATE: 18.12.82

HAUL: A76

NET: BONGO II

LAT: 62°00.3'S

TOTAL WEIGHT: 371.09

TOTAL COUNT: 7662

LONG:71°42.6'E

	WEIGHT:	COUNT:
*CALANUS PROPINQUUS	0.11	22
*CALANOIDES ACUTUS	0.94	816
*RHINCALANUS GIGAS	6.43	1464
HYPERIELLA DILATATA	0.01	1
EUPHAUSIA SUPERBA	362.30	5340
SAGITTA GAZELLAE	0.15	1
LIMACINA HELICINA	0.33	11
CLIO PYRAMIDATA	0.57	3
SPONGIOBRANCHAEA AUSTRALIS	0.11	2
CLIONE LIMACINA	0.07	1
SALP INDET.	0.07	1

DATE: 18.12.82

HAUL: A77

NET: RMT-8

LAT: 62°01.4'S  
LONG: 71°43.2'E

TOTAL WEIGHT: 592.60

TOTAL COUNT: 10542

	WEIGHT:	COUNT:
DESMONEMA SP	20.42	1
CTENOPHORE	0.36	4
TOMOPTERIS CARPENTERI	2.23	10
TOMOPTERIS SEPTENTRIONALIS	0.87	4
TOMOPTERIS SP.	2.17	10
CALANUS PROPINQUUS	0.02	5
CALANOIDES ACUTUS	0.01	12
RHINCALANUS GIGAS	0.16	23
CYLLOPUS LUCASII	2.84	58
VIBILIA ANTARCTICA	1.49	60
PRIMNO MACROPA	0.10	3
EUPHAUSIA SUPERBA	6.20	130
*THYSANOESSA MACRURA	312.00	9950
SAGITTA GAZELLAE	7.40	76
CHAETOGNATH INDET.	0.13	2
LIMACINA HELICINA	1.27	43
CLIO PYRAMIDATA	18.71	84
SPONGIOBRANCHAEA AUSTRALIS	2.14	15
CLIONE LIMACINA	2.17	14
ALLUROTEUTHIS ANTARCTICUS	1.08	2
SALPA THOMPSONI (SOL)	210.80	30
LARVACEAN	0.03	6

DATE: 19.12.82

HAUL: A78

NET: RMT-8

LAT: 61°00.6'S

TOTAL WEIGHT: 408.78

TOTAL COUNT: 3020

LONG: 74°57.5'E

	WEIGHT:	COUNT:
PHIALIDIUM SIMPLEX	0.74	22
CTENOPHORE	3.61	2
RHYNCHONERELLA SP.	0.13	9
TOMOPTERIS CARPENTERI	13.97	22
TOMOPTERIS SEPTENTRIONALIS	0.02	1
TOMOPTERIS SP.	0.68	33
*CALANUS PROPINQUUS	0.02	5
*CALANOIDES ACUTUS	0.16	112
*RHINCALANUS GIGAS	11.32	1533
CYLOPUS LUCASII	1.81	41
VIBILIA ANTARCTICA	0.93	29
HYPEROCHE SP.	0.25	2
HYPERIELLA DILATATA	0.02	3
PRIMNO MACROPA	0.02	1
EUPHAUSIA SUPERBA	3.32	35
THYSANOESEA MACRURA	1.84	88
SAGITTA GAZELLAE	78.22	786
CHAETOGNATH INDET.	0.21	22
LIMACINA HELICINA	+	1
CLIO PYRAMIDATA	15.54	198
SPONGIOBRANCHAEA AUSTRALIS	2.78	18
CLIONE LIMACINA	1.96	13
ALLUROTEUTHIS ANTARCTICUS	0.71	2
SALPA THOMPSONI (SOL)	269.99	31
LARVACEAN	+	1
KREFFTICHTHYS ANDERSSONI	0.22	1
ELECTRONA ANTARCTICA LARVA	0.31	9

DATE: 19.12.82

HAUL: A79

NET: BONGO I

LAT: 61°01.7'S

TOTAL WEIGHT: 8.16

TOTAL COUNT: 1166

LONG: 74°49.4'E

	WEIGHT:	COUNT:
MEDUSA INDET.	0.03	1
SIPHONOPHORE NECTOPHORE	1.03	91
RHYNCHONERELLA SP.	0.06	14
TOMOPTERIS SP.	0.17	22
CALANUS PROPINQUUS	0.04	12
CALANOIDES ACUTUS	0.50	296
RHINCALANUS GIGAS	2.85	602
EUCHIRELLA ROSTROMAGNA	+	2
EUCHAETA ANTARCTICA	+	10
METRIDIA GERLACHEI	+	3
HALOPTILUS OCELLATUS	+	5
COPEPOD INDET.	+	1
HYPERIELLA DILATATA	+	1
PRIMNO MACROPA	+	1
EUPHAUSIA SUPERBA	0.14	2
EUKROHNIA HAMATA	0.10	30
SAGITTA GAZELLAE	1.01	15
SAGITTA MARRI	0.01	3
CHAETOGNATH INDET.	0.17	26
LIMACINA HELICINA	1.03	24
CLIO PYRAMIDATA	0.58	3
CLIONE LIMACINA	0.32	1
SALPA THOMPSONI (SOL)	0.12	1

DATE: 19.12.82

HAUL: A79

NET: BONGO II

LAT: 61°01.7'S TOTAL WEIGHT: 3503.60 TOTAL COUNT: 295

LONG: 74°49.4'E

	WEIGHT:	COUNT:
PERIPHYLLA PERIPHYLLA	3500.00	1
MEDUSA INDET.	0.65	1
SIPHONOPHORE NECTOPHORE	0.36	30
RHYNCHONERELLA SP.	0.01	2
TOMOPTERIS SP.	0.07	6
CALANUS PROPINQUUS	0.03	8
CALANOIDES ACUTUS	0.17	113
RHINCALANUS GIGAS	0.98	208
EUCHAETA ANTARCTICA	+	1
METRIDIA GERLACHEI	+	1
HALOPTILUS OCELLATUS	+	1
HYPERIELLA DILATATA	0.01	1
PRIMNO MACROPA	0.01	1
EUKROHNIA HAMATA	0.38	10
SAGITTA GAZELLAE	0.53	4
CHAETOGNATH INDET.	0.27	2
LIMACINA HELICINA	0.08	3
ELECTRONA ANTARCTICA LARVA	0.05	2

DATE: 19.12.82                      HAUL: A80                      NET: BONGO I  
 LAT: 59°59.8'S      TOTAL WEIGHT: 592.54      TOTAL COUNT: 3593  
 LONG: 74°54.8'E

	WEIGHT:	COUNT:
SIPHONOPHORE BRACT	+	1
LOPADORHYNCHIDAE INDET.	0.12	1
CALANOIDES ACUTUS	0.01	6
RHINCALANUS GIGAS	0.17	55
VIBILIA ANTARCTICA	0.56	11
HYPERIELLA DILATATA	0.01	1
PRIMNO MACROPA	0.02	2
EUPHAUSIA SUPERBA	481.61	3360
EUKROHNIA HAMATA	0.03	6
SAGITTA GAZELLAE	1.47	12
SAGITTA MARRI	0.10	7
CHAETOGNATH INDET.	0.11	2
LIMACINA HELICINA	0.16	5
SALPA THOMPSONI (AGG)	108.13	123
ELECTRONA ANTARCTICA LARVA	0.04	1

DATE: 19.12.82                      HAUL: A80                      NET: BONGO II  
 LAT: 59°59.8'S      TOTAL WEIGHT: 807.50      TOTAL COUNT: 5590  
 LONG: 74°54.8'E

	WEIGHT:	COUNT:
CALANUS PROPINQUUS	+	1
CALANOIDES ACUTUS	+	4
RHINCALANUS GIGAS	0.11	28
CYLOPUS LUCASII	0.09	3
VIBILIA ANTARCTICA	0.99	17
PRIMNO MACROPA	0.02	1
EUPHAUSIA SUPERBA	710.72	5430
EUKROHNIA HAMATA	0.13	4
LIMACINA HELICINA	0.15	5
CLIO PYRAMIDATA	0.19	1
SALPA THOMPSONI (AGG)	95.06	95
ELECTRONA ANTARCTICA LARVA	0.04	1

DATE: 19.12.82

HAUL: A81

NET: RMT-8

LAT: 60°00.0'S    TOTAL WEIGHT: 30402.48    TOTAL COUNT: 4854  
LONG: 74°55.6'E

	WEIGHT:	COUNT:
SIPHONOPHORE NECTOPHORE	0.02	1
CALANUS PROPINQUUS	+	1
CALANOIDES ACUTUS	+	3
RHINCALANUS GIGAS	0.14	28
CYLOPUS LUCASII	+	1
VIBILIA ANTARCTICA	0.23	4
THYSANOESEA MACRURA	0.96	13
EUKROHNIA HAMATA	0.07	18
SAGITTA GAZELLAE	0.90	10
CHAETOGNATH INDET.	0.16	5
*SALPA THOMPSONI (SOL)	30400.00	4770

DATE: 23.12.82

HAUL: A82

NET: RMT-8

LAT: 53°52.1'S TOTAL WEIGHT: 477.93 TOTAL COUNT: 5430  
LONG: 105°31.4'E

	WEIGHT:	COUNT:
PERIPHYLLA PERIPHYLLA	20.32	4
PANTACHOGON SP.	0.07	2
MEDUSA INDET.	6.32	1
SIPHONOPHORE BRACT	55.36	696
CTENOPHORE	0.69	5
NEMERTEAN	0.54	2
TOMOPTERIS CARPENTERI	10.19	22
TRAVISIOPSIS LANCEOLATA	0.43	2
OSTRACOD	2.21	8
COPEPOD	14.74	1701
LANCEOLA SP.	0.42	10
PROSCINA SP.	+	3
CYLOPUS LUCASII	0.01	2
VIBILIA ANTARCTICA	0.38	9
HYPEROCHE SP.	0.05	1
PARATHEMISTO GAUDICHAUDI (BISP.)	1.19	24
PARATHEMISTO GAUDICHAUDI (COMP.)	3.64	94
HYPERIELLA DILATATA	0.02	3
PRIMNO MACROPA	0.74	44
CYPHOCARIS RICHARDI	0.78	4
GAMMARID INDET.	0.40	1
EUPHAUSIA FRIGIDA	0.84	19
EUPHAUSIA TRIACANTHA	19.52	109
EUPHAUSIA VALLENTINI	1.11	14
THYSANOESSA MACRURA	7.62	186
? THYSANOESSA MACRURA FURCILIA	0.15	39
EUKROHNIA HAMATA	16.90	873
SAGITTA GAZELLAE	39.04	146
SAGITTA MARRI	3.87	163
SAGITTA MAXIMA	44.42	594
CHAETOGNATH INDET.	6.53	302
CLIO PYRAMIDATA	1.97	25
SPONGIOBRANCHAEA AUSTRALIS	0.31	21
CLIONE LIMACINA	0.04	1
THLIPTODON SP.	0.08	3
GALITEUTHIS GLACIALIS	0.94	7
SALPA THOMPSONI (AGG)	126.90	83
CYCLOTHONE SP.	0.19	3
KREFFTICHTHYS ANDERSSONI	3.14	8
ELECTRONA ANTARCTICA	80.18	185
ELECTRONA SUBASPERSA	0.34	1
GYMNOSCOPELUS BRAUERI	2.71	3
LAMPANYCTUS ACHIRUS	1.52	1
NOTOLEPIS COATSI	1.11	6



DATE: 27.12.82

HAUL: A83

NET: RMT-8

LAT: 46°49.7'S TOTAL WEIGHT: 21405.25 TOTAL COUNT: 16971  
LONG: 131°37.9'E

	WEIGHT:	COUNT:
SIPHONOPHORE BRACT	5.64	20
OSTRACOD	0.07	1
COPEPOD	1.73	123
CYLOPOUS LUCASII	4.57	270
VIBILIA ANTARCTICA	2.89	209
PARATHEMISTO GAUDICHAUDI (BISP.)	0.16	2
PARATHEMISTO GAUDICHAUDI (COMP.)	9.15	150
HYPERIELLA MACRONYX	0.01	1
HYPERIELLA DILATATA	+	1
GLOSSOCEPHALUS SP.	0.21	1
PHRONIMA SEDENTARIA	3.01	20
PRIMNO MACROPA	0.50	9
CYPHOCARIS RICHARDI	0.01	1
MYSID	8.54	3
EUPHAUSIA VALLENTINI	0.25	3
EUPHAUSIA LONGIROSTRIS	0.39	4
EUPHAUSIA SIMILIS	11.75	144
EUPHAUSIA SIMILIS VAR. ARMATA	0.10	1
EUPHAUSIA LUCENS	10.41	40
NEMATOSCELIS MEGALOPS	4.34	57
THYSANOESSA GREGARIA	6.38	200
STYLOCHEIRON ELONGATUM	0.08	4
STYLOCHEIRON MAXIMUM	7.46	80
PETALIDIUM FOLIACEUM	3.78	8
SERGESTES ARCTICUS	7.27	15
ACANTHEPHYRA PELAGICA	35.94	22
EUKROHNIA HAMATA	0.12	13
SAGITTA GAZELLAE	6.65	76
SAGITTA MAXIMA	0.51	8
CHAETOGNATH INDET.	0.08	4
CLIO PYRAMIDATA	1.80	11
ONYKIA SP.	0.83	1
GONATUS ANTARCTICUS	0.57	1
GALITEUTHIS SP.	0.84	2
AMPHITRETUS PELAGIUS	0.32	1
*SALPA THOMPSONI (AGG)	15750.00	15247
*PYROSOMA SP.	5500.00	114
DERICHTHYS SERPENTINUS	16.91	2
BATHYLAGUS ANTARCTICUS	74.05	1
CYCLOTHONE SP.	5.89	51
WOODSIA MEYERWAARDENI	1.03	2
PHOTICHTHYS SP.	1.99	1
ARGYROPELECUS HEMIGYMNUS	6.19	28
PROTOMYCTOPHUM (H.) PARALLELUM	0.47	2
PROTOMYCTOPHUM (H.) SUBPARALLELUM	4.12	10
ELECTRONA CARLSBERGI	0.07	2
ELECTRONA PAUCIRAISTRA	0.92	1
DIAPHUS HUDSONI	29.14	10
LAMPANYCTUS AUSTRALIS	8.02	1
HINTONIA CANDENS	12.53	1
SCOPELARCHOIDES KREFFTI	11.12	1
MELAMPHAES LONGIVELIS	4.20	2
FISH INDET.	3.42	1
FISH LARVA INDET.	0.90	21

Taxonomic group	Bongo Nets N=16	RMT blind hauls		IYGPT hauls n=3
		Without deep hauls n=60	Including deep hauls n=62	
Medusae	52.93	2.30	2.04	0.001
Siphonophores	0.36	1.62	1.46	1.34
Ctenophores	0.007	2.02	1.78	0.62
Chaetognaths	0.46	0.25	0.29	0.02
Polychaetes	0.25	0.20	0.18	0.12
Copepods	4.80	0.49	0.44	0.002
Amphipods	0.29	0.53	0.06	0.01
Pteropods	0.19	0.13	0.11	0.005
Squid	0.005	0.02	0.02	0.004
Salps	10.42	22.23	31.35	1.98
Fish	0.24	0.28	0.31	2.09
<u>Euphausia superba</u>	28.50	57.81	50.82	94.17
<u>Euphausia</u> <u>crystallophias</u>	1.03	11.34	10.02	0.27
Other <u>Euphausia</u> spp.	0.00	0.01	0.03	0.00
<u>Thysanoessa</u> spp.	0.72	0.73	0.65	0.003
Others*	0.18	0.12	0.14	0.27
Total Weight (g)	6634.38	166067.83	187951.01	182353.00

\*includes nemertines, ostracods, mysids, decapods, larvaceans and fish eggs.

Table 1. Percentage composition of catches by nets by weight.

Taxonomic group	Bongo Nets N=16	RMT blind hauls		IYGPT hauls n=3
		Without deep hauls n=60	Including deep hauls n=62	
Medusae	0.007	0.002	0.02	0.0004
Siphonophores	0.53	7.82	7.69	11.40
Ctenophores	0.008	0.28	0.27	0.36
Chaetognaths	1.54	0.60	0.86	0.04
Polychaetes	0.14	0.12	0.12	0.009
Copepods	79.58	32.55	31.86	0.09
Amphipods	0.47	0.16	0.27	0.09
Pteropods	0.43	0.34	0.34	0.03
Squid	0.0006	0.005	0.006	0.001
Salps	1.62	1.46	3.36	1.66
Fish	0.014	0.13	0.16	3.05
<u>Euphausia superba</u>	12.17	26.74	25.99	82.06
<u>Euphausia</u> <u>crystallorophias</u>	0.46	22.48	21.86	1.07
Other <u>Euphausia</u> spp.	0.00	0.01	0.07	0.00
<u>Thysanoessa</u> spp.	2.83	5.06	4.94	0.06
Others*	0.21	0.21	0.21	0.08
Total numbers	148284.00	783970.00	806371.00	262253.00

\*includes nemertines, ostracods, mysids, decapods, larvaceans and fish eggs.

Table 2. Percentage composition of catches by nets by numbers.

Figure 2. Composition of catch by weight and numbers - RMT nets  
 \* excluding deep hauls.

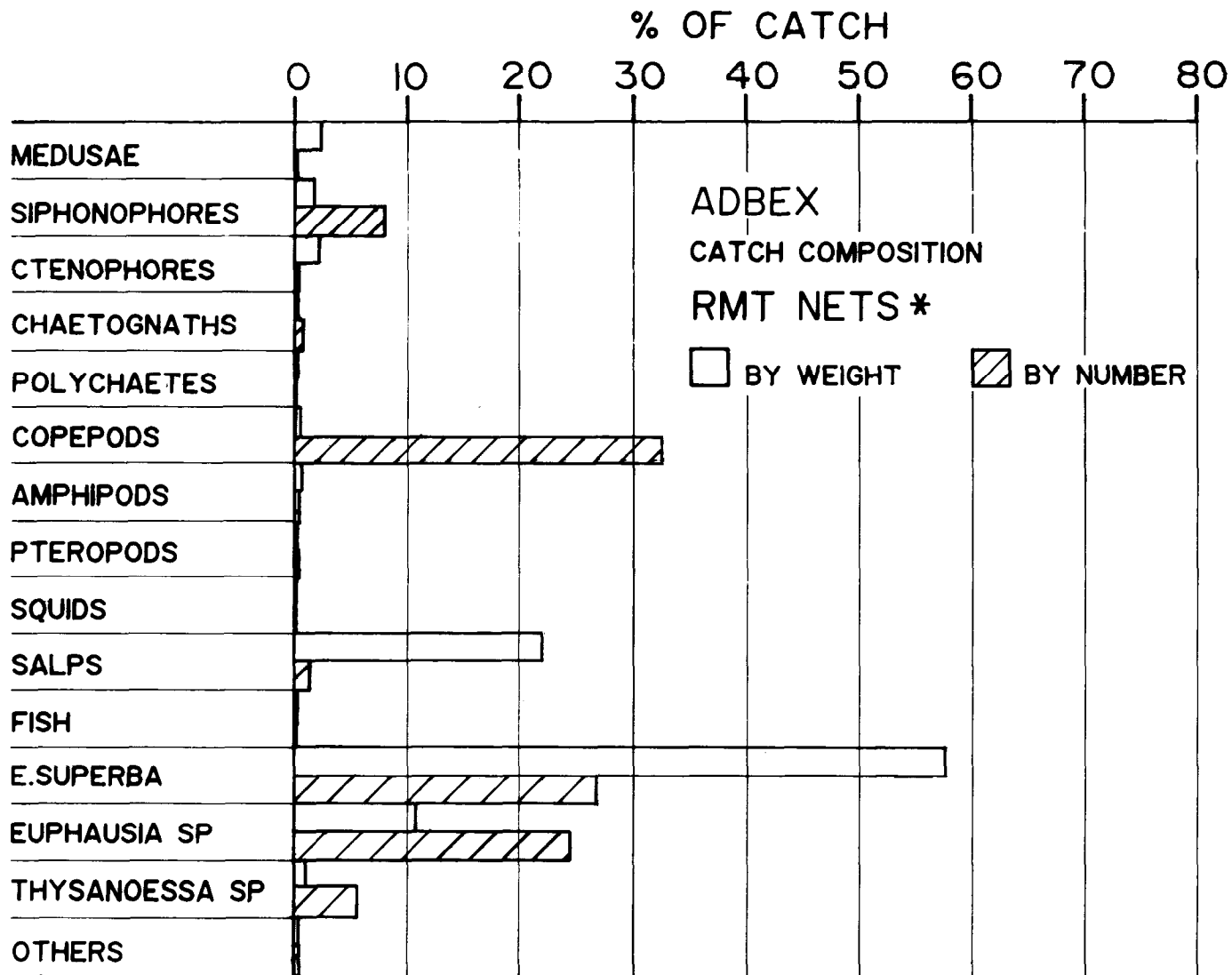
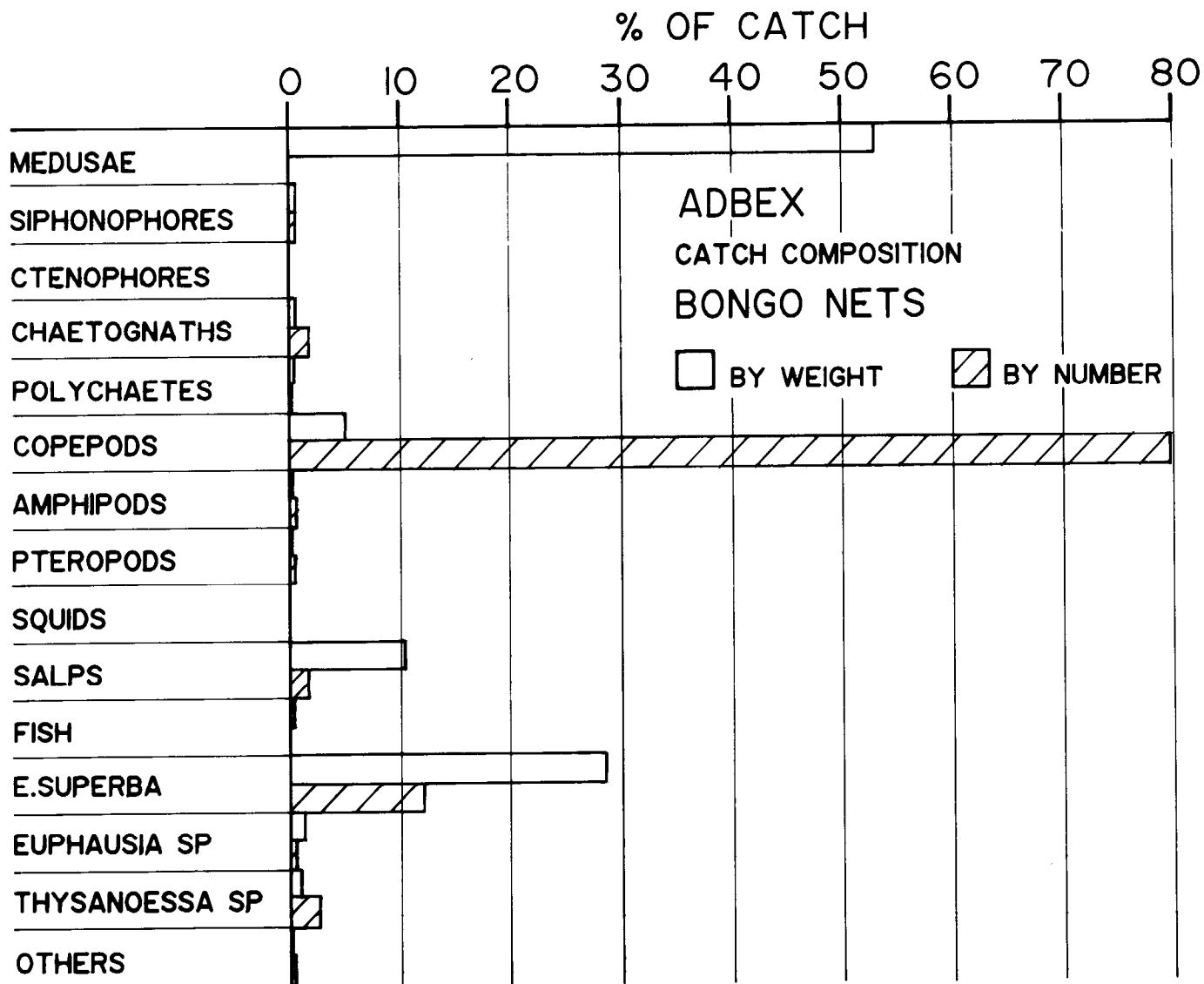


Figure 3. Composition of catch by weight and numbers - bongo nets.





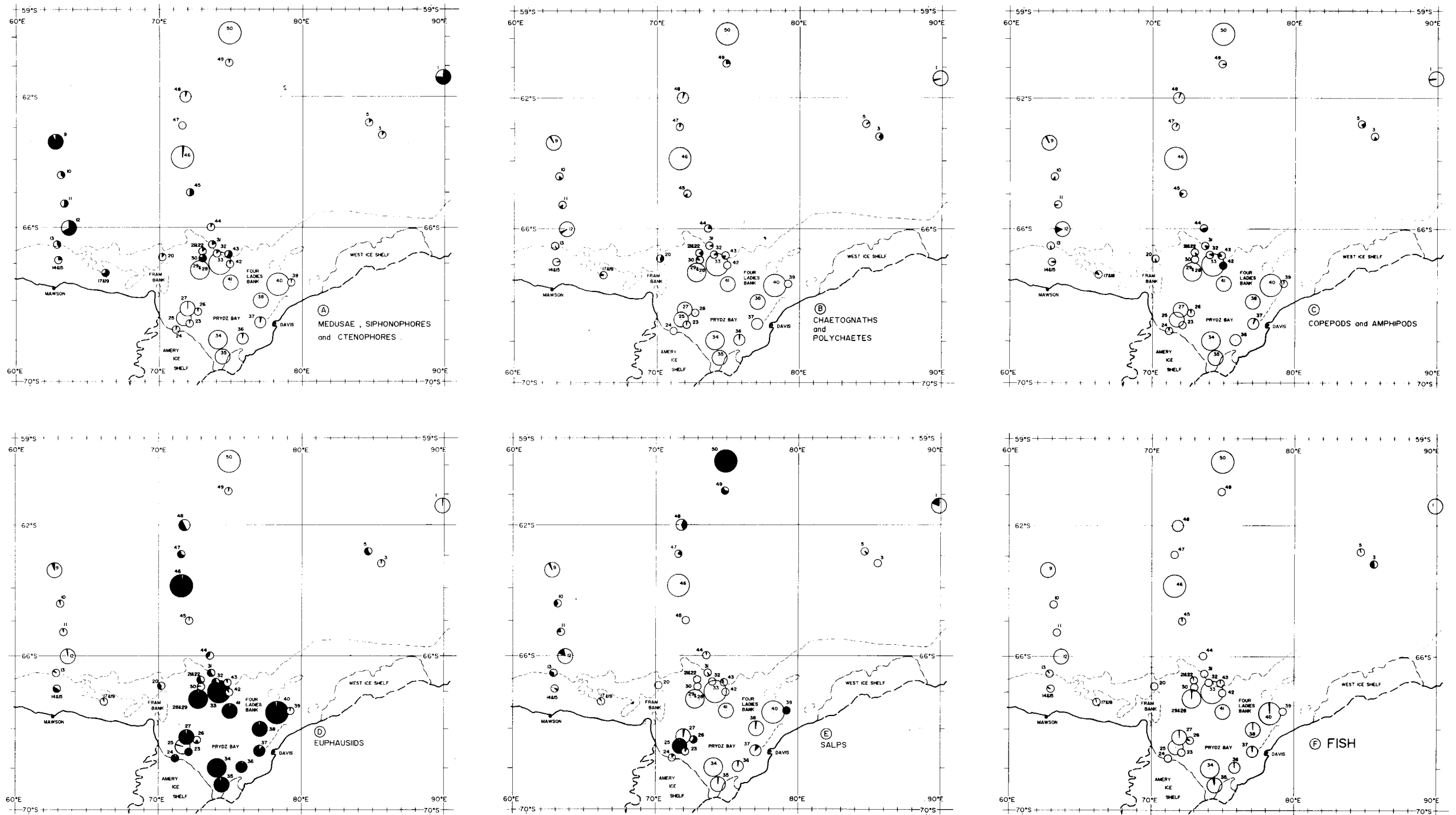


Figure 4. Percentage by weight of groups of organisms in RMT hauls by station.  
Diameter of circle is proportional to size of catch per thirty minute haul:

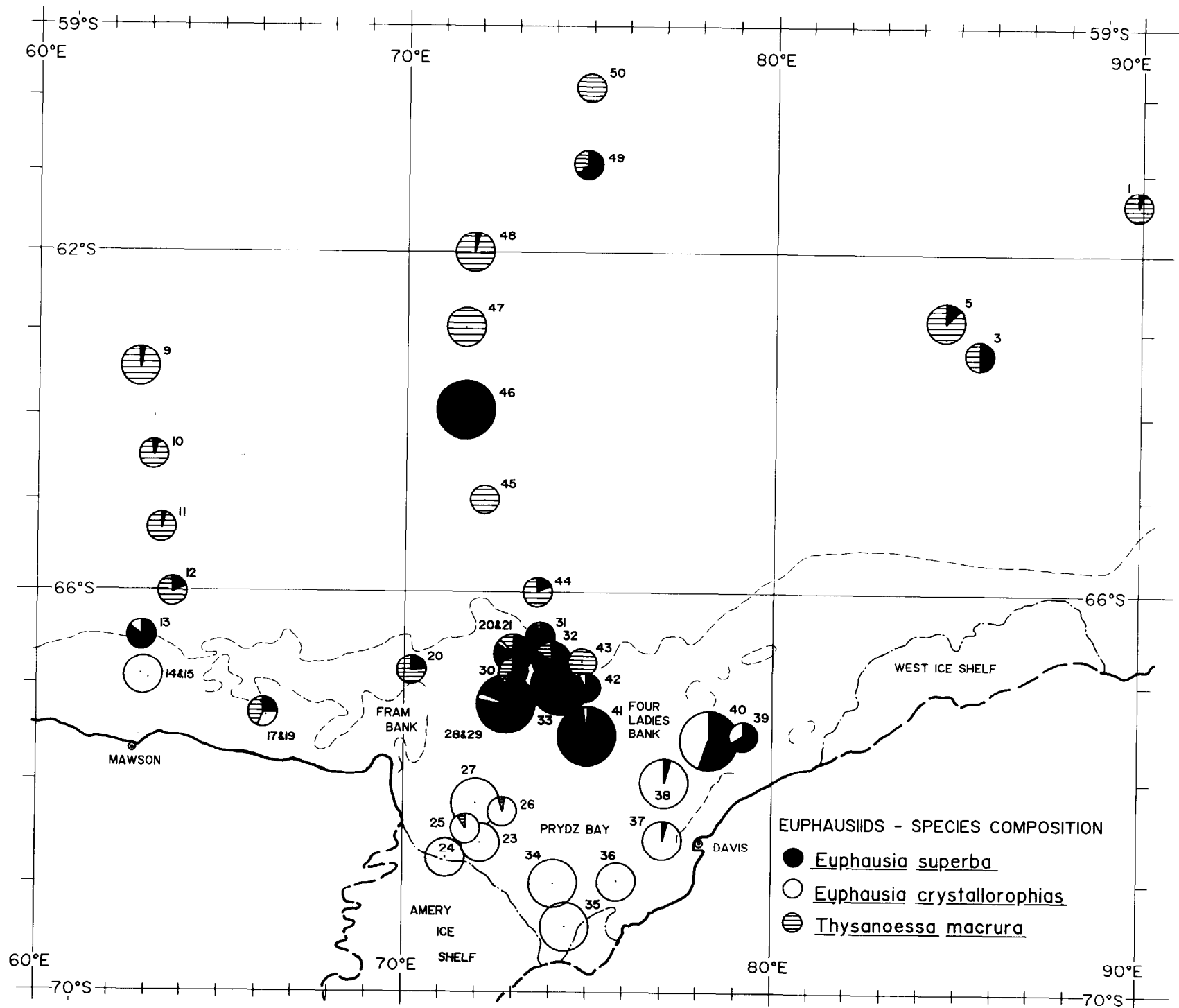


Figure 5. Percentage by weight of euphausiid species in RMT hauls by station. Diameter of circle is proportional to size of euphausiid catch per thirty minute haul:



#### 4. EUPHAUSIA SUPERBA

The following pages present some data on the catch of Euphausia superba.

Figures 6 and 7 show length frequencies and sexual maturity stages of E. superba by haul, for RMT, Bongo and IYGPT nets.

Figures 8 to 11 show length frequencies of E. superba for all nets; RMT nets only; bongo nets only, and IYGPT nets only.

Figure 12 shows numbers of E. superba caught at three depths during a 27 hour period.

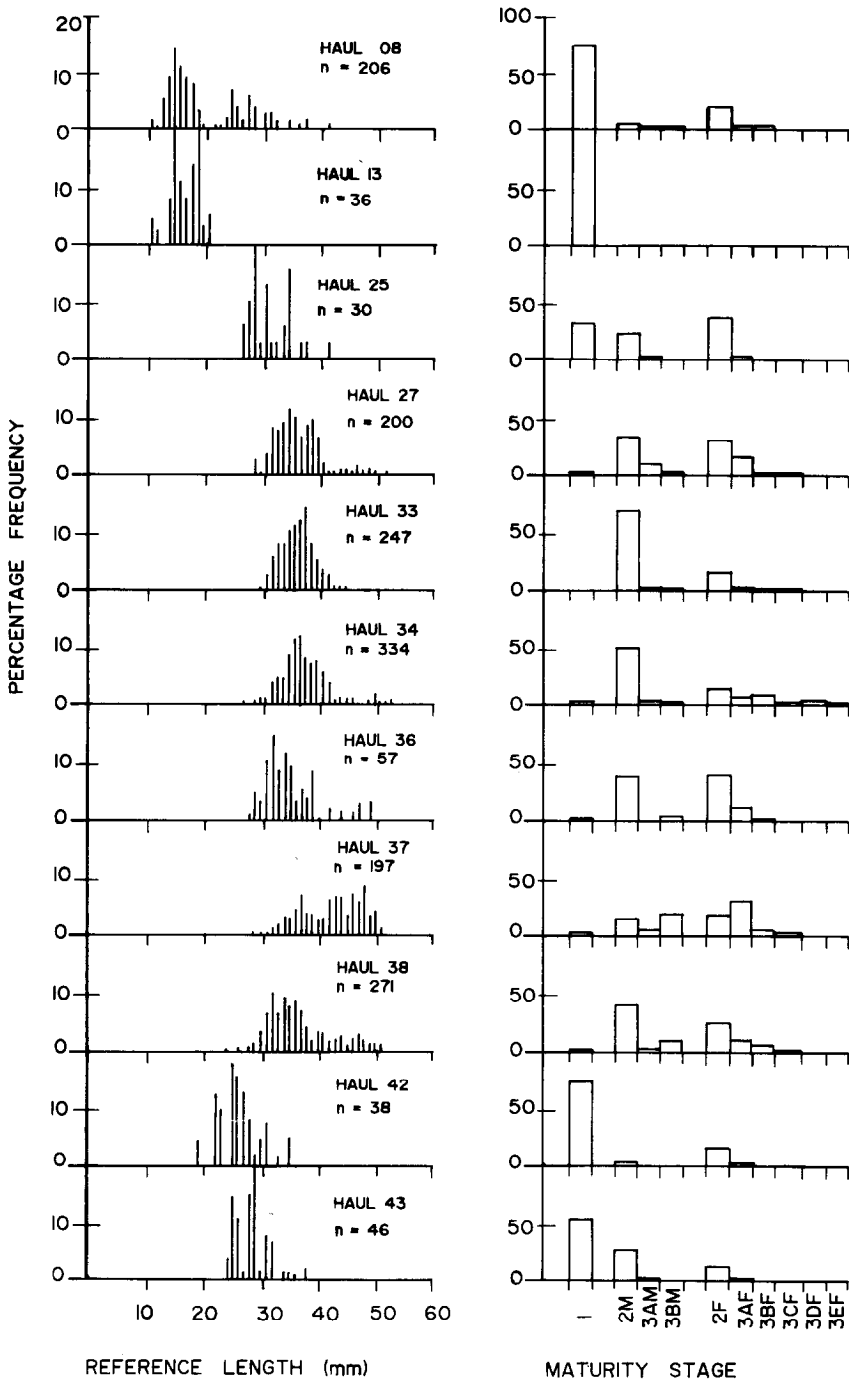
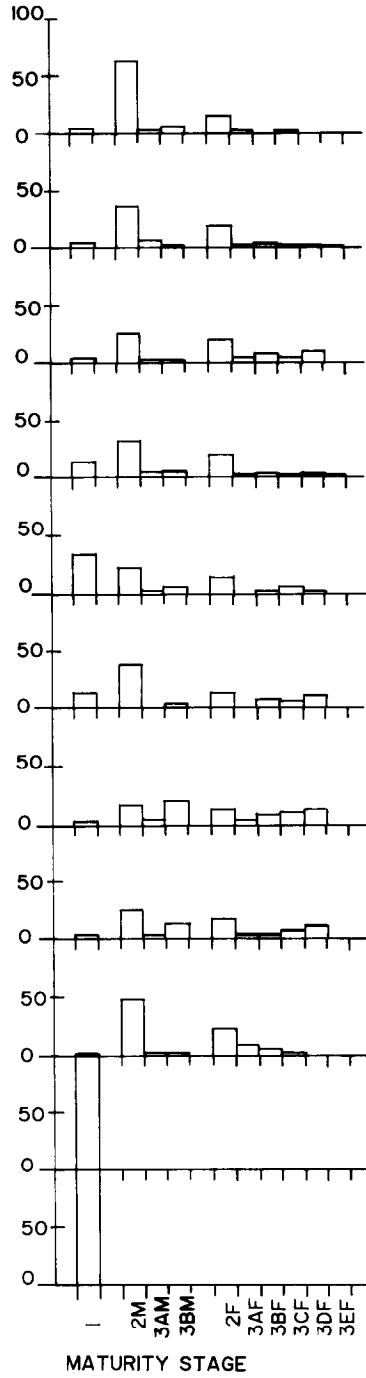
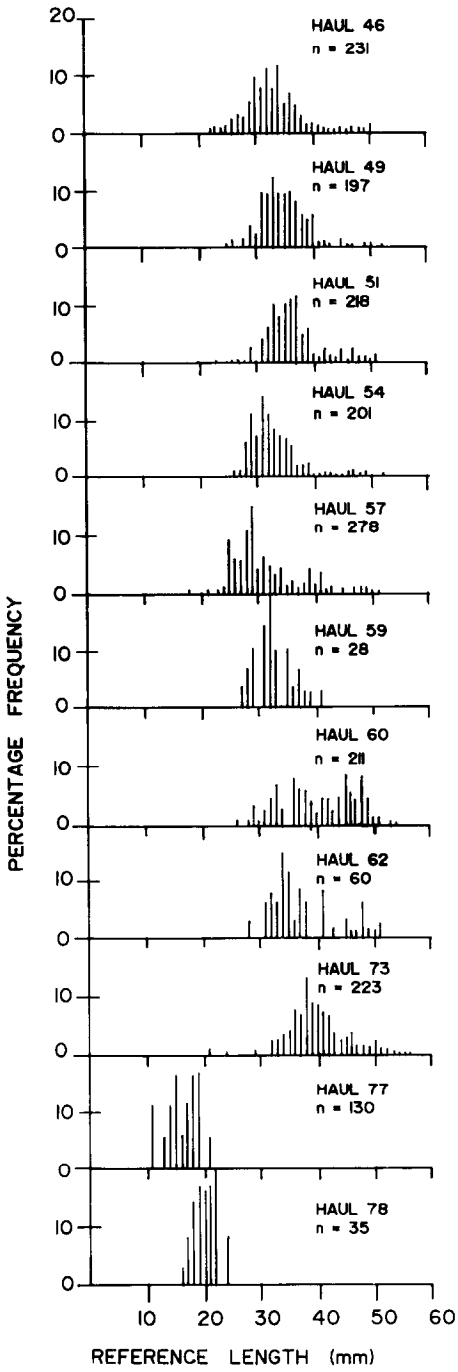


Figure 6. *E. superba* length frequency and sexual maturity stage by station - RMT samples.



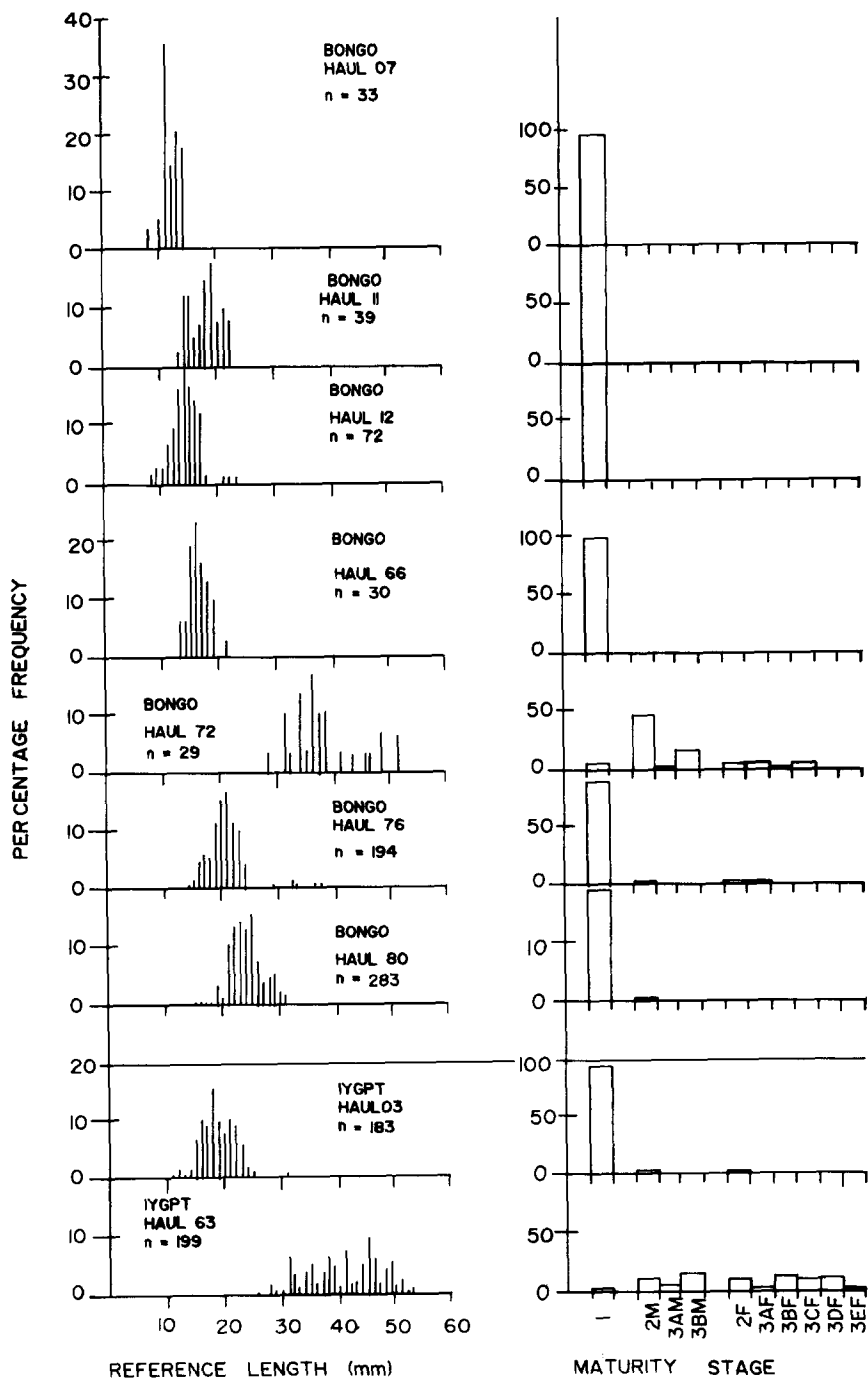


Figure 7. *E. superba* length frequency and sexual maturity stage by station - bongo and IYGPT samples.

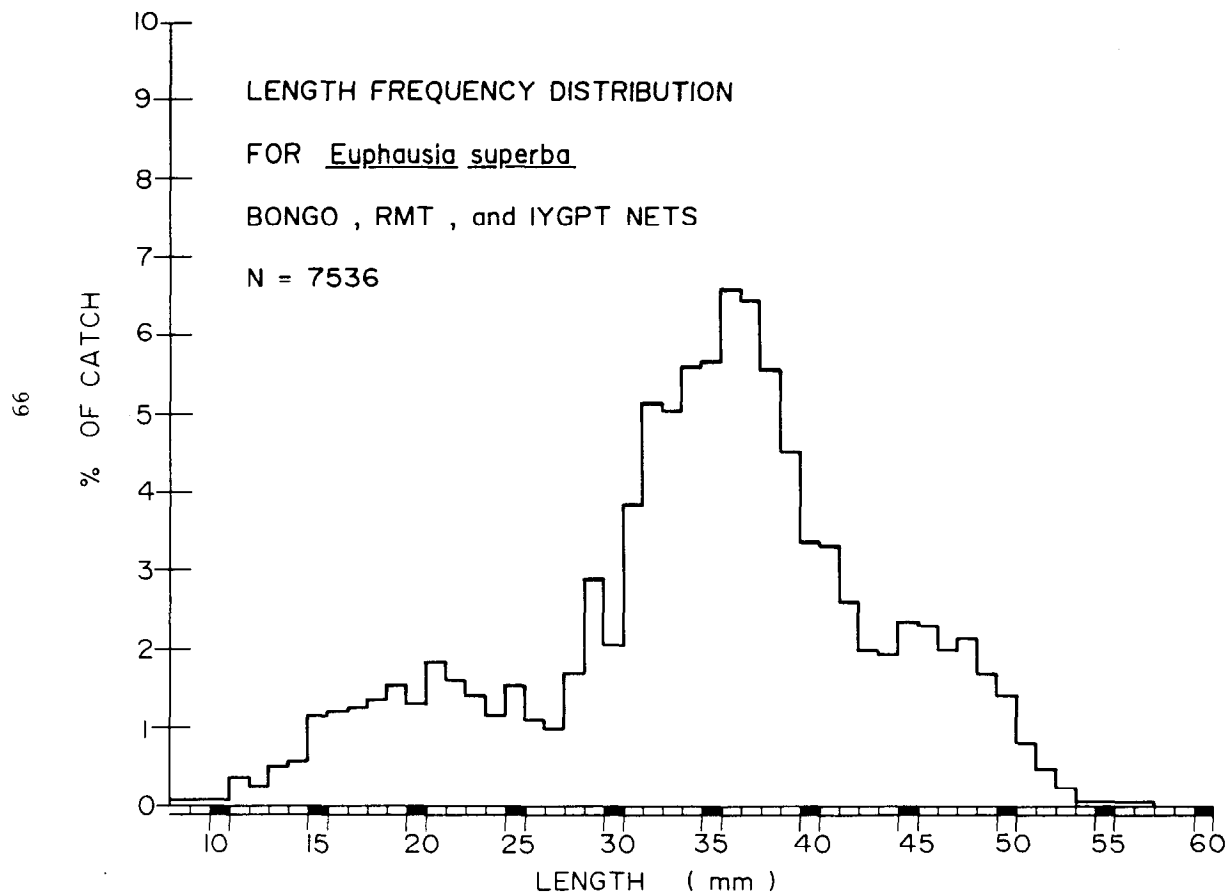


Figure 8. E. superba length frequency - all nets.

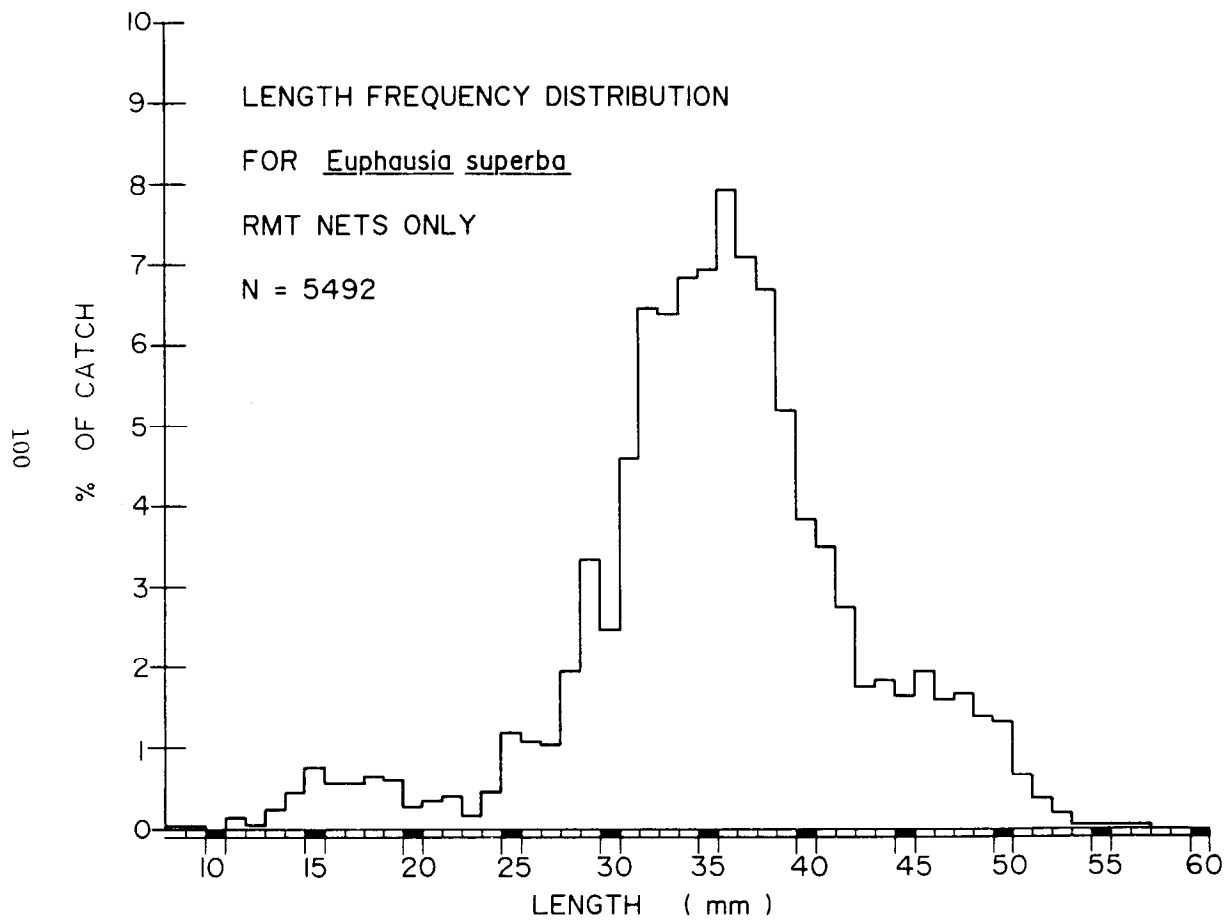


Figure 9. E. superba length frequency - RMT nets only.

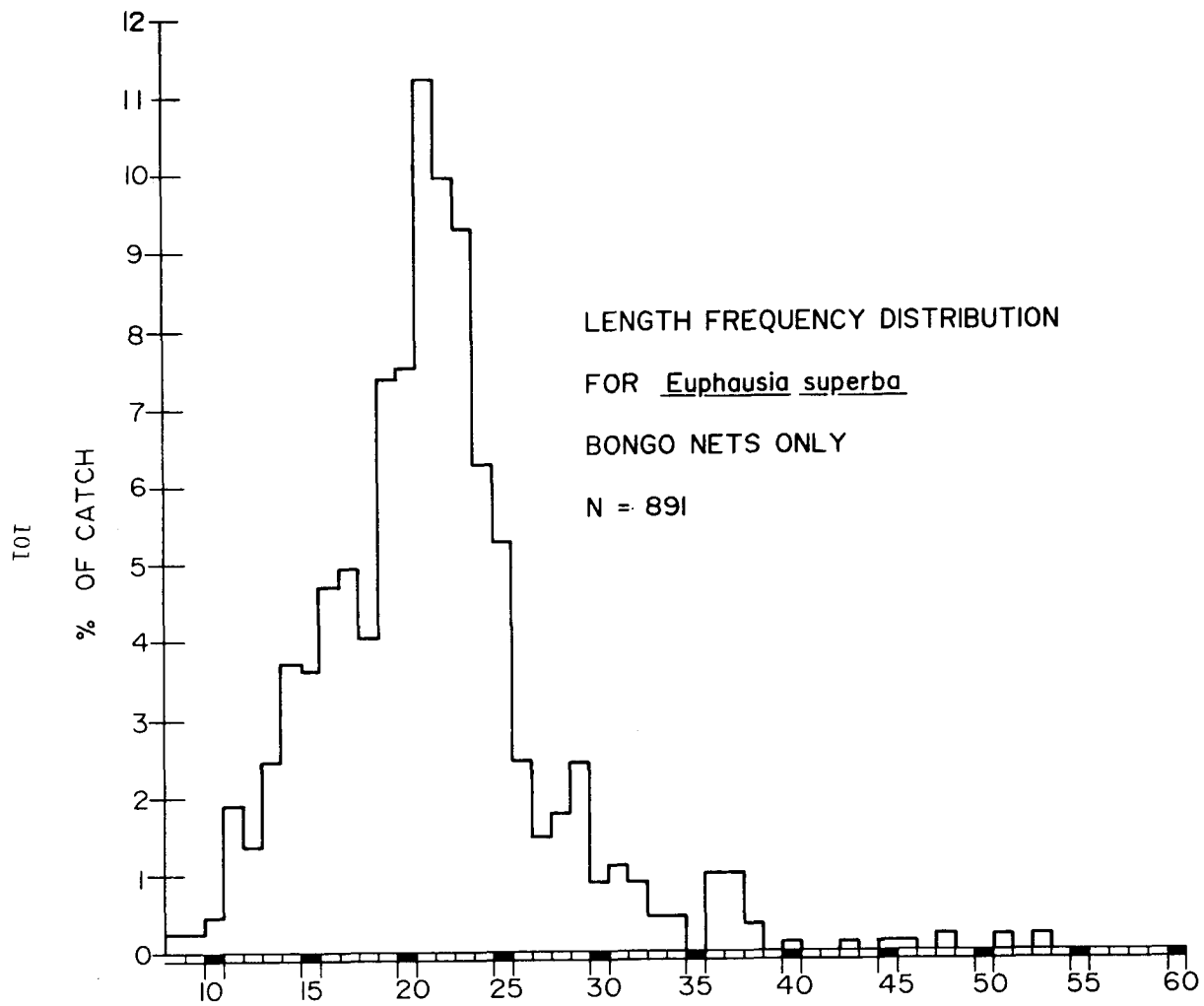


Figure 10. E. superba length frequency - bongo nets only.

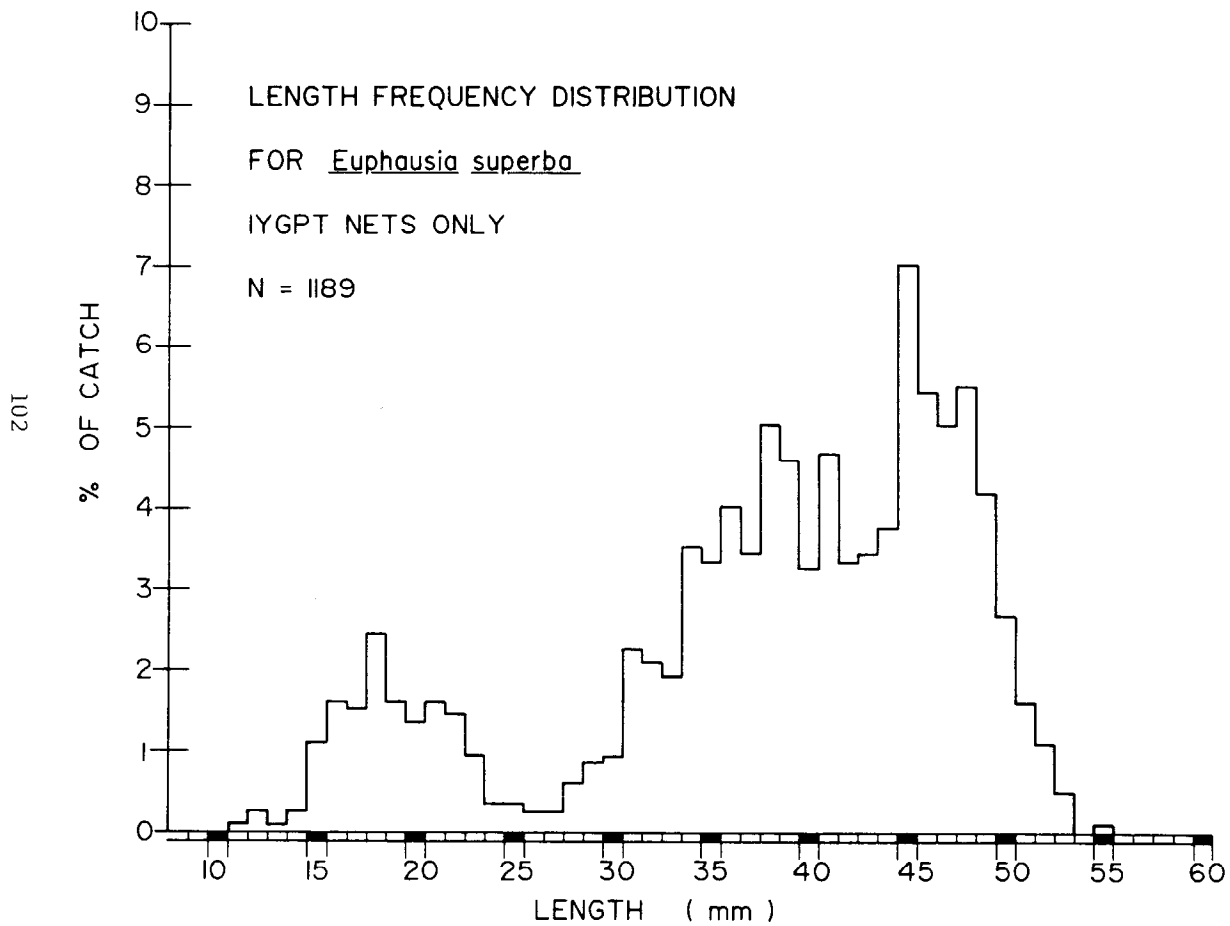


Figure 11. E. superba length frequency - IYGPT nets only.



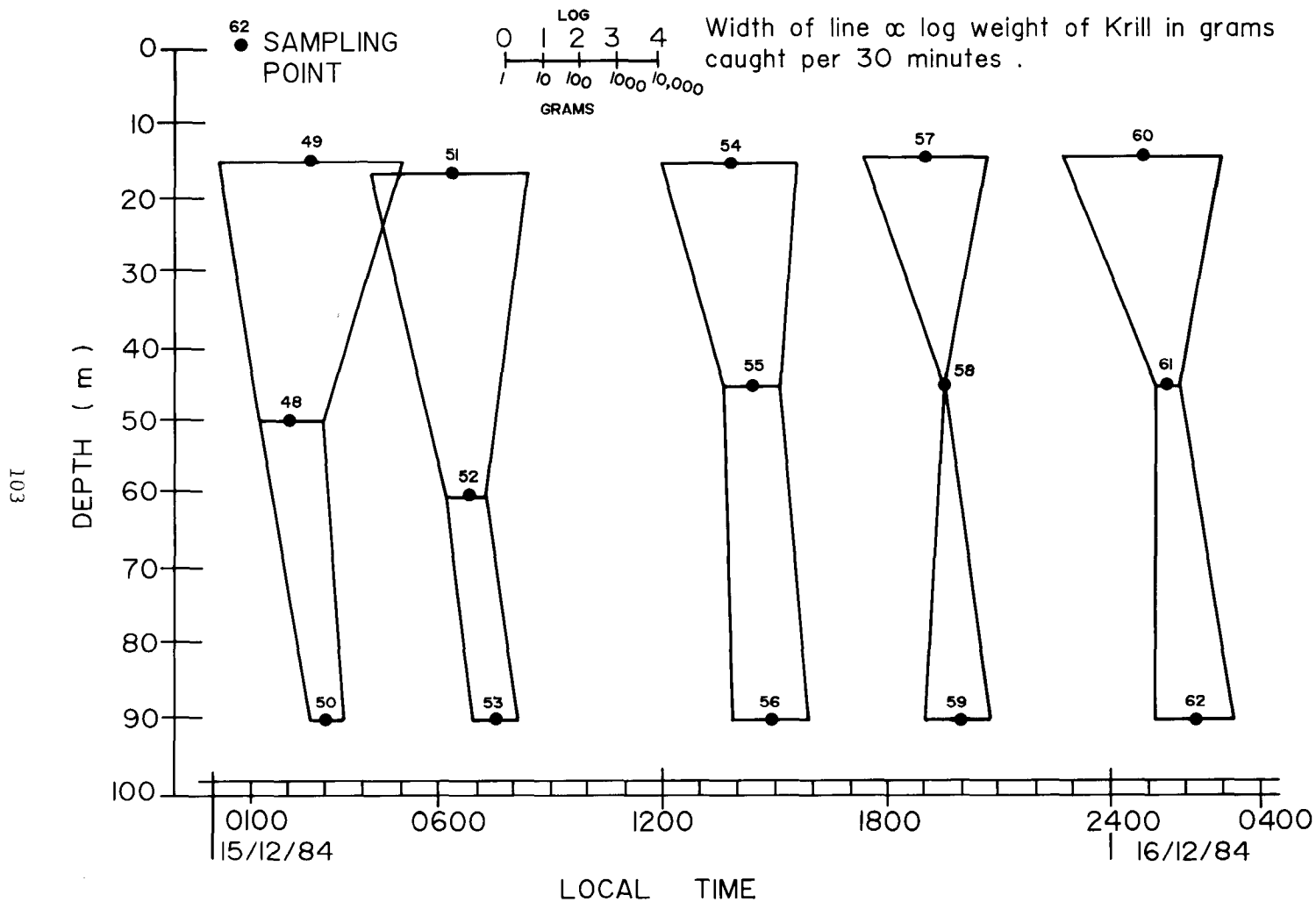


Figure 12. Vertical migration of *E. superba*. Catches at three depths over a twenty-seven hour period.



5. ALPHABETICAL LIST OF ORGANISMS CAUGHT,  
WITH THEIR TAXONOMIC AFFILIATION

<i>Acanthephyra pelagica</i>	Crustacea: Decapoda
<i>Ampelisca</i> sp.	Amphipoda: Gammaridea
<i>Amphitretus pelagius</i>	Cephalopoda: Octopoda
<i>Antarctomysis maxima</i>	Mysidacea
<i>Argyropelecus hemigymnus</i>	Osteichthyes: Sternopthychidae
<i>Artedidraco</i> sp.	Osteichthyes: Artedidraconidae
<i>Artedidraconidae</i> indet	Osteichthyes: Artedidraconidae
<i>Bathylagus antarcticus</i>	Osteichthyes: Bathylagidae
<i>Bathydraconidae</i> indet	Osteichthyes: Bathydraconidae
<i>Brachioteuthis riisei</i>	Dephalopoda: Teuthoidea
<i>Calanoides acutus</i>	Copepoda: Calanoida
<i>Calanus propinquus</i>	Copepoda: Calanoida
<i>Calycopepis borchgrevinki</i>	Hydrozoa: Anthomedusae
<i>Candacia maxima</i>	Copepoda: Calanoida
<i>Channichthyidae</i> indet	Osteichthyes: Channichthyidae
<i>Chaenodraco wilsoni</i>	Osteichthyes: Channichthyidae
<i>Chionodraco</i> sp.	Osteichthyes: Channichthyidae
<i>Chorismus antarcticus</i>	Crustacea: Decapoda
<i>Clio chaptalii</i>	Gastropoda: Thecosomata
<i>Clio pyramidata</i>	Gastropoda: Thecosomata
<i>Clione limacina</i>	Gastropoda: Gymnosomata
<i>Cranchiidae</i> indet	Cephalopoda: Teuthoidea
<i>Cryodraco antarcticus</i>	Osteichthyes: Channichthyidae
<i>Cyclothone</i> sp.	Osteichthyes: Gonostomatidae
<i>Cylopus lucasii</i>	Amphipoda: Hyperiidae
<i>Cyphocaris richardi</i>	Amphipoda: Gammaridea
<i>Derichthys serpentinus</i>	Osteichthyes: Derichthyidae
<i>Desmonema</i> sp.	Scyphozoa: Semaestomae
<i>Diaphus hudsoni</i>	Osteichthyes: Myctophidae
<i>Diphyes antarctica</i>	Hydrozoa: Siphonophora
<i>Diplulmaris antarctica</i>	Scyphozoa: Semaestomae
<i>Echiniphimedia</i> sp.	Amphipoda: Gammaridea
<i>Electrona antarctica</i>	Osteichthyes: Myctophidae
<i>Electrona carlsbergi</i>	Osteichthyes: Myctophidae
<i>Electrona paucirastra</i>	Osteichthyes: Myctophidae
<i>Electrona subaspera</i>	Osteichthyes: Myctophidae
<i>Epimeriella macronyx</i>	Amphipoda: Gammaridea
<i>Euchaeta antarctica</i>	Copepoda: Calanoida
<i>Euchirella rostromagna</i>	Copepoda: Calanoida
<i>Eukrohnia hamata</i>	Chaetognatha: Eukrohniidae
<i>Euphausia crystallorophias</i>	Crustacea: Euphausiacea
<i>Euphausia frigida</i>	Crustacea: Euphausiacea
<i>Euphausia longirostris</i>	Crustacea: Euphausiacea
<i>Euphausia lucens</i>	Crustacea: Euphausiacea
<i>Euphausia similis</i>	Crustacea: Euphausiacea
<i>Euphausia similis</i> var <i>armata</i>	Crustacea: Euphausiacea
<i>Euphausia superba</i>	Crustacea: Euphausiacea
<i>Euphausia triacantha</i>	Crustacea: Euphausiacea
<i>Euphausia vallentini</i>	Crustacea: Euphausiacea
<i>Eusirus</i> sp.	Amphipoda: Gammaridea
<i>Galiteuthis glacialis</i>	Cephalopoda: Teuthoidea
<i>Glossocephalus</i> sp.	Amphipoda: Hyperiidae

*Gonatus antarcticus*  
*Gymnodraco acuticeps*  
*Gymnoscopelus braueri*  
*Halitrephes maasi*  
*Haloptilus ocellatus*  
*Hintonia candens*  
*Hyperia macrocephala*  
*Hyperiella dilatata*  
*Hyperiella macronyx*  
*Hyperoche sp.*  
*Ihlea racovitzai* (AGG)  
*Ihlea racovitzai* (SOL)  
*Jassa falcata*  
*Koellikerina maasi*  
*Krefflichthys anderssoni*  
*Lampanyctus achirus*  
*Lampanyctus australis*  
*Lanceola sp.*  
*Laodicia pulchra*  
Larvacean  
*Leucothoe sp.*  
*Limacina helicina*  
*Lopadorhynchidae* indet  
*Maupasia sp.*  
*Melamphaes longivelis*  
*Metridia gerlachei*  
*Nematoscelis megalops*  
*Notolepis coatsi*  
*Onykia sp.*  
? *Orchomene sp.*  
*Pagetopsis macropterus*  
*Pandea rubra*  
*Pantachogon sp.*  
*Parathemisto gaudichaudi* (BISP)  
*Parathemisto gaudichaudi* (COMP)  
*Pareledone adeliaeana*  
*Pareledone charcoti*  
*Pareledone harrisoni*  
*Pariphimidiella sp.*  
*Pegantha sp.*  
*Pelagobia longicirrata*  
*Periphylla periphylla*  
*Petalidium foliaceum*  
*Phialidium simplex*  
*Photichthys sp.*  
*Phronima sedentaria*  
*Pleuragramma antarcticum*  
*Pleuromamma robusta*  
*Primno macropa*  
*Prionodraco evansii*  
*Proboloides sp.*  
*Proscina sp.*  
*Protomyctophum* (H) *parallelum*  
*Protomyctophum* (H) *subparallelum*  
*Psychroteuthis sp.*

Cephalopoda: Teuthoidea  
Osteichthyes: Bathydraconidae  
Osteichthyes: Myctophidae  
Hydrozoa: Trachymedusae  
Copepoda: Calanoida  
Osteichthyes: Myctophidae  
Amphipoda: Hyperiididae  
Amphipoda: Hyperiididae  
Amphipoda: Hyperiididae  
Amphipoda: Hyperiididae  
Tunicata: Salpida  
Tunicata: Salpida  
Amphipoda: Gammaridea  
Hydrozoa: Anthomedusae  
Osteichthyes: Myctophidae  
Osteichthyes: Myctophidae  
Osteichthyes: Myctophidae  
Amphipoda: Hyperiididae  
Hydrozoa: Leptomedusae  
Tunicata: Appendicularia  
Amphipoda: Gammaridea  
Gastropoda: Thecosomata  
Polychaeta: Lopadorhynchidae  
Polychaeta: Lopadorhynchidae  
Osteichthyes: Melamphaidae  
Copepoda: Calanoida  
Crustacea: Euphausiacea  
Osteichthyes: Myctophidae  
Cephalopoda: Teuthoidea  
Amphipoda: Gammaridea  
Osteichthyes: Channichthyidae  
Hydrozoa: Anthomedusae  
Hydrozoa: Trachymedusae  
Amphipoda: Hyperiididae  
Amphipoda: Hyperiididae  
Cephalopoda: Octopoda  
Cephalopoda: Octopoda  
Cephalopoda: Octopoda  
Amphipoda: Gammaridea  
Hydrozoa: Narcomedusae  
Polychaeta: Lopadorhynchidae  
Scyphozoa: Coronatae  
Crustacea: Decapoda  
Hydrozoa: Leptomedusae  
Osteichthyes: Gonostomatidae  
Amphipoda: Hyperiididae  
Osteichthyes: Nototheniidae  
Copepoda: Calanoida  
Amphipoda: Hyperiididae  
Osteichthyes: Bathydraconidae  
Amphipoda: Gammaridea  
Amphipoda: Hyperiididae  
Osteichthyes: Myctophidae  
Osteichthyes: Myctophidae  
Cephalopoda: Teuthoidea

<i>Pyrosoma</i> sp.	Tunicata: Pyrosomida
<i>Racovitzia glacialis</i>	Osteichthyes: Bathydraconidae
<i>Rhincalanus gigas</i>	Copepoda: Calanoida
<i>Rhynchonerella bongraini</i>	Polychaeta: Alciopidae
<i>Rhynchonerella petersii</i>	Polychaeta: Alciopidae
<i>Sagitta gazellae</i>	Chaetognatha: Sagittidae
<i>Sagitta marri</i>	Chaetognatha: Sagittidae
<i>Sagitta maxima</i>	Chaetognatha: Sagittidae
<i>Sagitella kowalevski</i>	Polychaeta: Typhloscolecidae
<i>Salpa thompsoni</i> (AGG)	Tunicata: Salpida
<i>Salpa thompsoni</i> (SOL)	Tunicata: Salpida
<i>Scopelarchoides kreefti</i>	Osteichthyes: Scopelarchidae
<i>Sergestes arcticus</i>	Crustacea: Decapoda
<i>Spongiobranchaea australis</i>	Gastropoda: Gymnosomata
<i>Stylocheiron elongatum</i>	Crustacea: Euphausiacea
<i>Stylocheiron maximum</i>	Crustacea: Euphausiacea
<i>Thliptodon</i> sp.	Gastropoda: Gymnosomata
<i>Thysanoessa gregaria</i>	Crustacea: Euphausiacea
<i>Thysanoessa macrura</i>	Crustacea: Euphausiacea
<i>Tomopteris carpenteri</i>	Polychaeta: Tomopteridae
<i>Tomopteris planktonis</i>	Polychaeta: Tomopteridae
<i>Tomopteris septentrionalis</i>	Polychaeta: Tomopteridae
<i>Travisiopsis lanceolata</i>	Polychaeta: Typhloscolecidae
<i>Travisiopsis levinseni</i>	Polychaeta: Typhloscolecidae
<i>Trematomus lepidorhinus</i>	Osteichthyes: Nototheniidae
<i>Trematomus scotti</i>	Osteichthyes: Nototheniidae
<i>Trematomus</i> sp.	Osteichthyes: Nototheniidae
<i>Trichotropidae</i> larva	Mollusca: Gastropoda
<i>Vanadis antarctica</i>	Polychaeta: Alciopidae
<i>Vibilia antarctica</i>	Amphipoda: Hyperiididae
<i>Waldeckia obesa</i>	Amphipoda: Gammaridea
<i>Woodsia meyerwardeni</i>	Osteichthyes: Gonostomatidae

Note: (AGG) = aggregate forms of salps  
(SOL) = solitary forms of salps



1. John M. Kirkwood (1982). A guide to the Euphausiacea of the Southern Ocean.
2. David O'Sullivan (1982). A guide to the Chaetognaths of the Southern Ocean and adjacent waters.
3. David O'Sullivan (1982). A guide to the pelagic Polychaetes of the Southern Ocean and adjacent waters.
4. David O'Sullivan (1982). A guide to the Scyphomedusae of the Southern Ocean and adjacent waters.
5. David O'Sullivan (1982). A guide to the Hydromedusae of the Southern Ocean and adjacent waters.
6. Paul J. McDonald (1983). Steam aided curing of concrete in Antarctica.
7. Richard Williams, John M. Kirkwood, David O'Sullivan (1983). FIBEX cruise zooplankton data.
8. David O'Sullivan (1983). A guide to the pelagic Tunicates of the Southern Ocean and adjacent waters.
9. Rosemary Horne (1983). The distribution of penguin breeding colonies on the Australian Antarctic Territory, Heard Island, the McDonald Islands, and Macquarie Island.
10. David O'Sullivan (1983). A guide to the pelagic Nemertean of the Southern Ocean and adjacent waters.
11. John M. Kirkwood (1983). A guide to the Decapoda of the Southern Ocean.
12. John M. Kirkwood (1983). A guide to the Mysidacea of the Southern Ocean.
13. T.H. Jacka (1983). A computer data base for Antarctic sea ice extent.
14. G.B. Burns (1983). The variation of Southern Hemisphere atmospheric vorticity around interplanetary magnetic field sector crossings.
15. Suzanne E. Stallman (1983). Gazetteer of the Australian Antarctic Territory.
16. Peter Keage (1984). Resource potential of the Australian Antarctic Territory.
17. Damien Jones (1983). Snow stratigraphy observations in the katabatic wind region of Eastern Antarctica.

(continued inside back cover)

18. G.R. Copson (1984). An annotated atlas of the vascular flora of Macquarie Island.
19. J.S. Boyd (1983). Invariant geomagnetic co-ordinates for Epoch 1977.25.
20. R.D. Seppelt (1984). The bryoflora of the Vestfold Hills and Ingrid Christensen Coast, Antarctica.
21. C. Christodoulou, B.J. Griffin and J. Foden (1984). The geology of Macquarie Island.
22. T.H. Jacka, L. Christou and B.J. Cook (1984). A data bank of mean monthly and annual surface temperatures for Antarctica, the Southern Ocean and South Pacific Ocean.
23. T. Ikeda, G. Hosie and J. Kirkwood (1984). ADBEX II cruise krill/zooplankton sampling data.
24. P.G. Quilty (1985). Mesozoic and Cenozoic history of Australia as it affects the Australian biota.
25. J.S. Reid and G.B. Burns (1985). An impulse function program.
26. M. Mallis (1985). A qualitative investigation into scavenging of airborne sea salt over Macquarie Island.
27. P.G. Quilty (1985). Mineral resources of the Australian Antarctic Territory and Comments by R.J. Tingey.
28. T.H. Jacka (1985). Australian glaciological research; 1982-83.
29. R.J. Tomkins (1985). Attendance of Wandering Albatrosses (Diomedea exulans) at a small colony on Macquarie Island.
30. David O'Sullivan and Graham Hosie (1985). A general guide to the metazoan zooplankton groups of the Southern Ocean.
31. R. Williams, J.M. Kirkwood and D.B. O'Sullivan (1986). ADBEX I cruise zooplankton data.
32. T. Ikeda, G. Hosie and M. Stolp (1986). SIBEX II cruise krill/zooplankton data.
33. Cao Chong, G.B. Burns and P. Jacklyn (1986). The morphology of pulsating aurorae.